

KEY PLAN

DETAIL BX (CABLE BRACING)

CONNECTION DETAILS

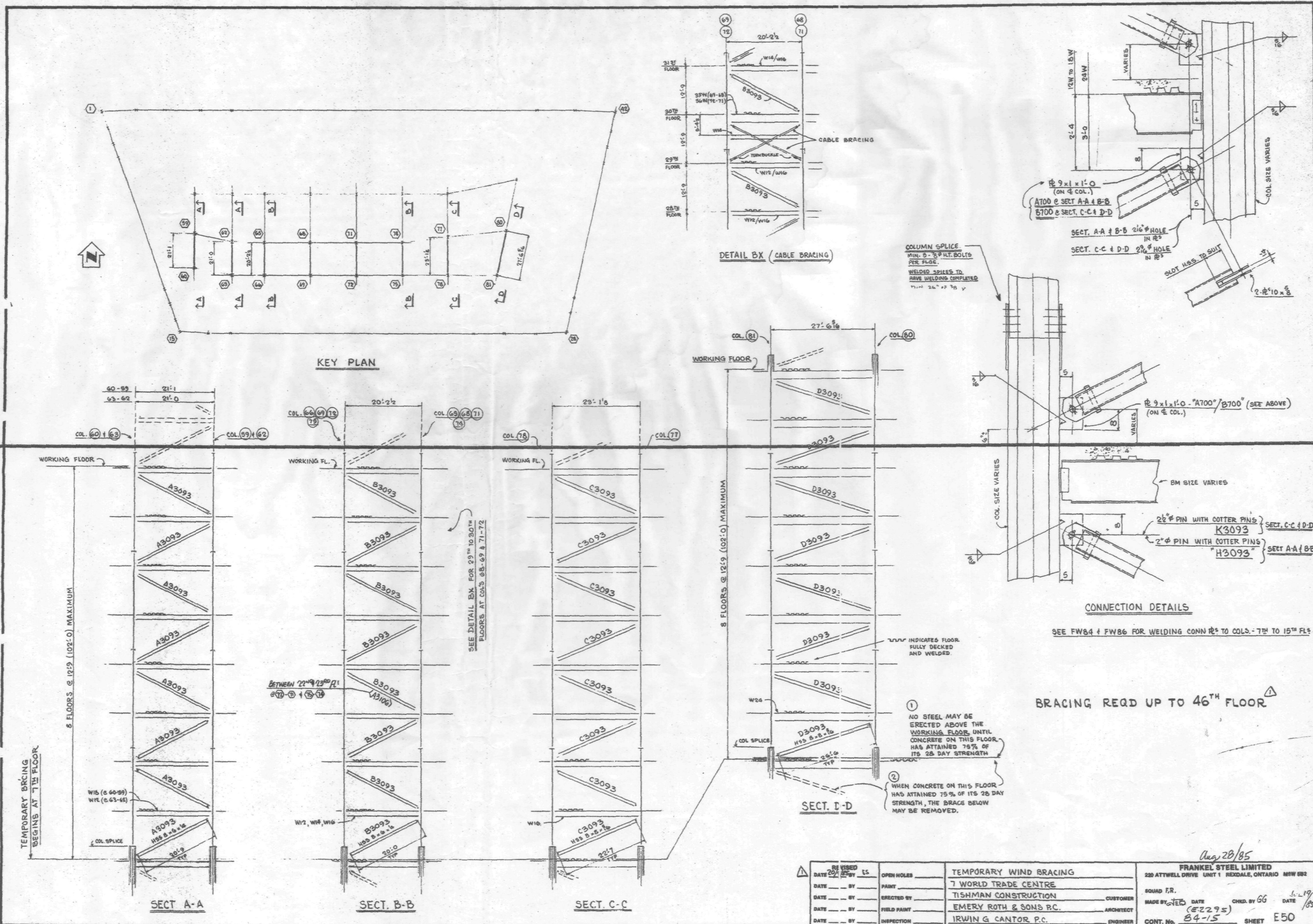
SECT. A-A

SECT. B-B

SECT. C-C

SECT. D-D

| | | | |
|---------------|-------------|------------------------|---|
| REVISED BY ES | OPEN HOLES | TEMPORARY WIND BRACING | FRANKEL STEEL LIMITED |
| DATE 20/11/85 | PAINT | 7 WORLD TRADE CENTRE | 220 ATTWELL DRIVE UNIT 1 REXDALE, ONTARIO M9W 6B2 |
| DATE BY | ERECTED BY | TISHMAN CONSTRUCTION | SQUAD F.R. |
| DATE BY | FIELD PAINT | EMERY ROTH & SONS P.C. | MADE BY JES DATE CHD. BY 66 DATE 1-19/85 |
| DATE BY | INSPECTION | IRWIN & CANTOR P.C. | (E2295) CONT. No. 84-15 SHEET E50 |



KEY PLAN

DETAIL BX (CABLE BRACING)

CONNECTION DETAILS

BRACING REQ'D UP TO 46TH FLOOR

| | | | |
|----------|-------|----|-------------|
| REVISION | DATE | BY | DESCRIPTION |
| 1 | 20/85 | LS | OPEN HOLES |
| 2 | | | PAINT |
| 3 | | | ERECTED BY |
| 4 | | | FIELD PARTY |
| 5 | | | INSPECTION |

| | |
|------------------------|--|
| TEMPORARY WIND BRACING | FRANKEL STEEL LIMITED |
| 7 WORLD TRADE CENTRE | 220 ATTWELL DRIVE UNIT 1, REXDALE, ONTARIO M9W 6R2 |
| TISHMAN CONSTRUCTION | SQUAD F.R. |
| EMERY ROTH & SONS P.C. | MADE BY DATE (E2295) CHD BY GG DATE 1/85 |
| IRWIN & CANTOR P.C. | CONT. No. B4-15 SHEET E50 |

Aug 28/85