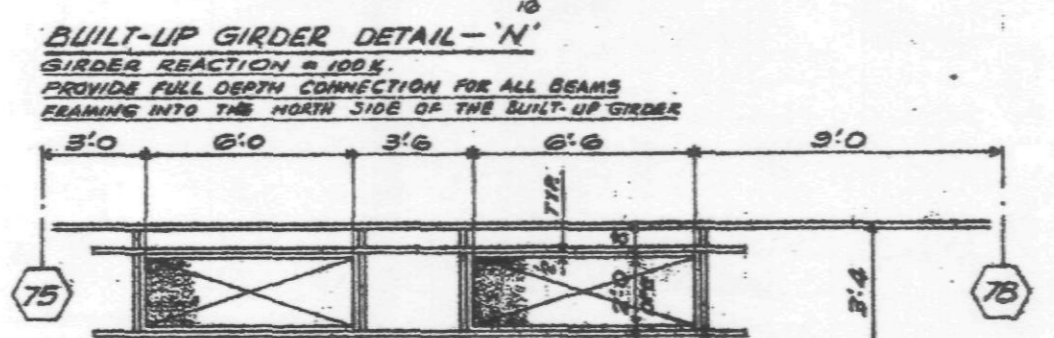
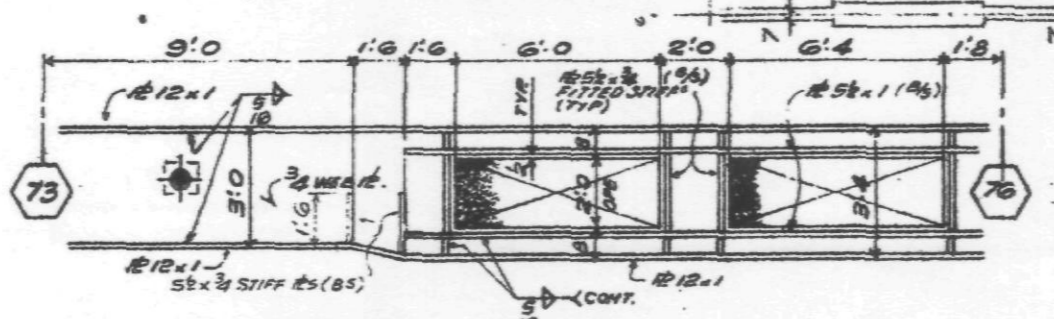
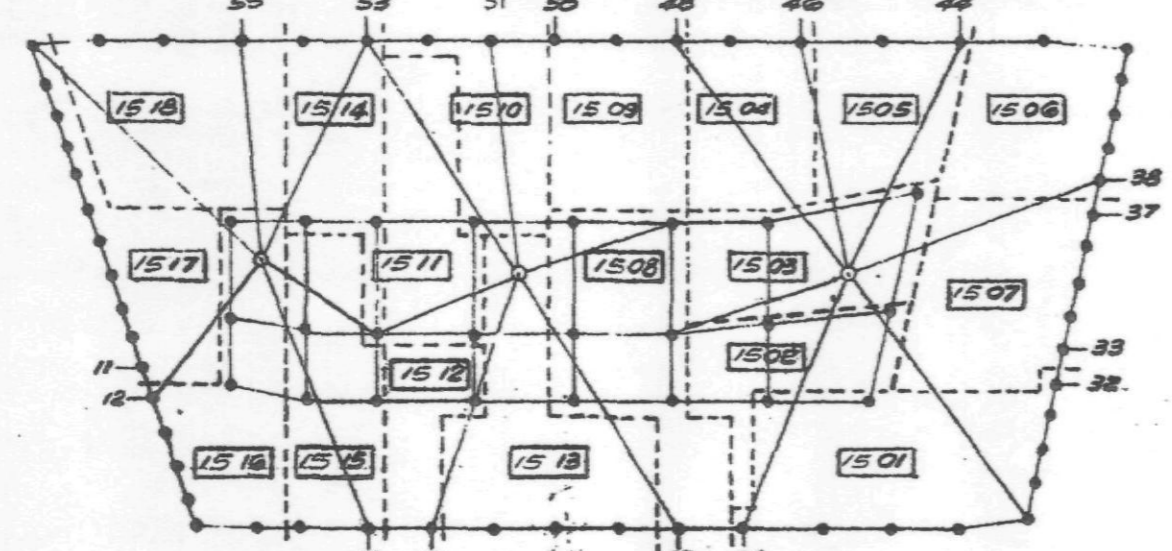


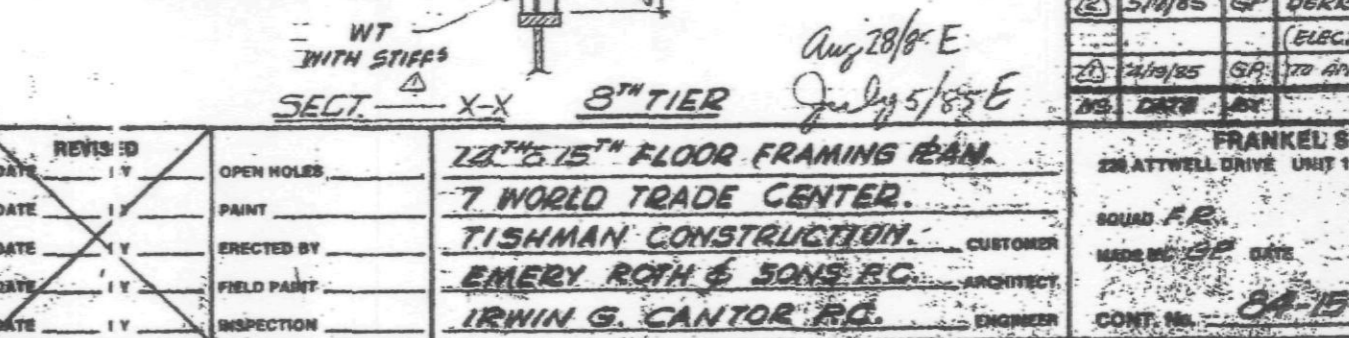
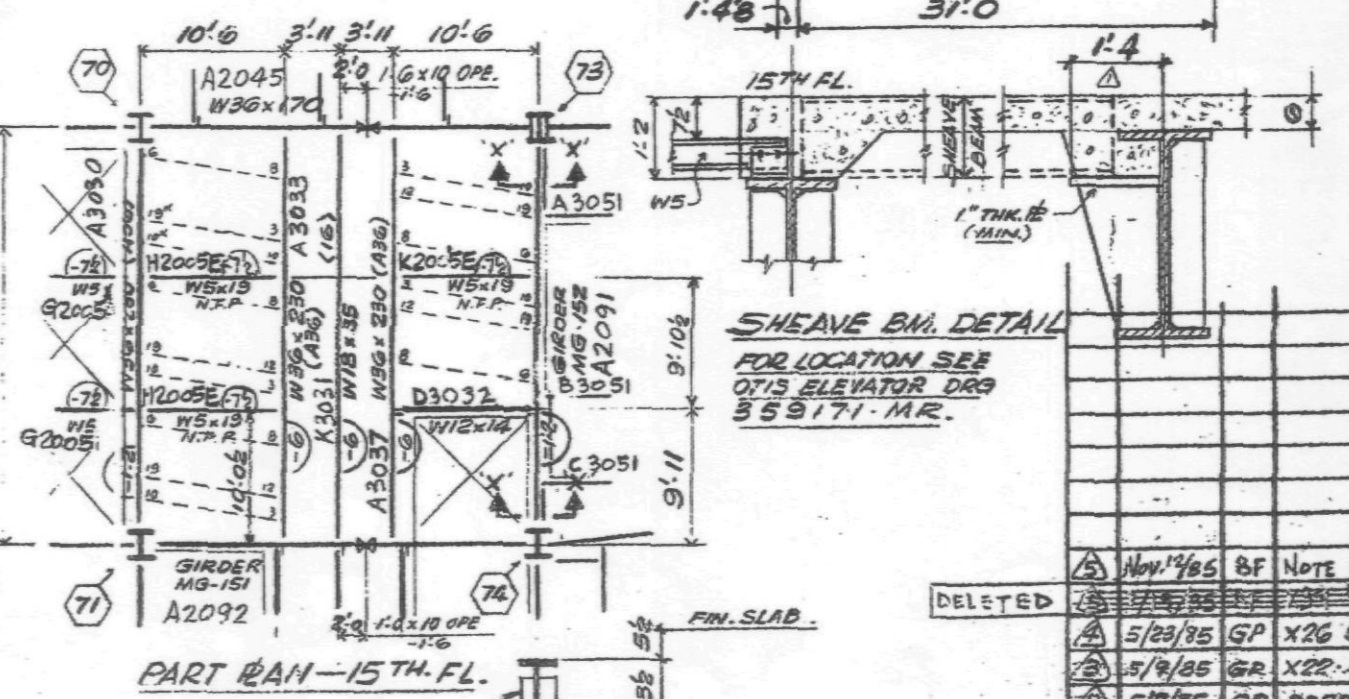
PLATE GIRDER SCHEDULE

MARK	TL	SECTION	FLS. E.	WEB E.	DEPTH	STEEL GRADE
MG-141	14	30K 30K	7'7"	13'7"	15	GR 50
MG-142	14	30K 30K	10'1"	13'7"	15	GR 50
MG-151	15	155K 155K	7'2"	32'2"	36	GR 50
MG-152	15	150K 150K	7'2"	31'1"	36	A36

FOR KEY PLAN SHOWING CONNECTION LOCATIONS SEE DWG. 9100



FIN. CONG. SLAB 14TH FLOOR EL. 773.3
FIN. CONG. SLAB 15TH FLOOR EL. 491.0
TOP OF STEEL 5' BELOW FIN. CONG. SLAB U.N.
ALL BEAMS SHALL BE ASTM A-572 GRADE 50 EXCEPT WIND GIRDERS INDICATED * WGT ON BEAM.
ALL BEAMS W/ (B-1) & SPANDREL BRACE BEAMS W/ 19 (-7) WHICH SHALL BE ASTM A-36
ALL COLS ARE A36 EXCEPT COLS WITH * WHICH ARE A572 GR. 50
REINF. # 3 FOR COLS WITH * UP TO 2" THK. - A572 GR. 50
OVER 2" THK. - A588
OVER 4" THK. - A572 GR. 42
OVER 6" THK. - A588
BEAM OPENING & ELEVATIONS, ARE GIVEN WITH RESPECT TO TOP OF STEEL.
(---) INDICATES # 5 SHEAR STUDS, FIELD APPLIED
(-) INDICATES CAMBER
FOR GENERAL NOTES - SEE E120
COL. SCHEDULE - E117, I17A
BEAM SPANNING TRUSS CONNECTIONS TO PERIMETER W/ WIND GIRDERS, SEE C117
FOR PERIMETER STUDS SEE CUST. DWG. 56 REV. 1

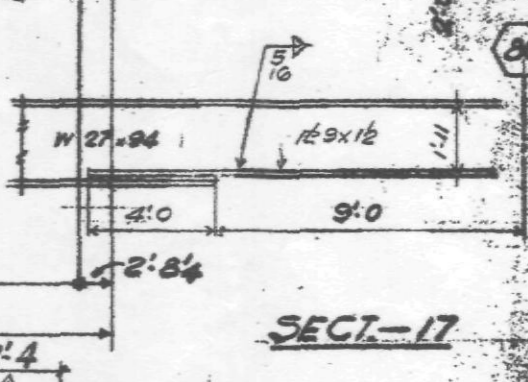
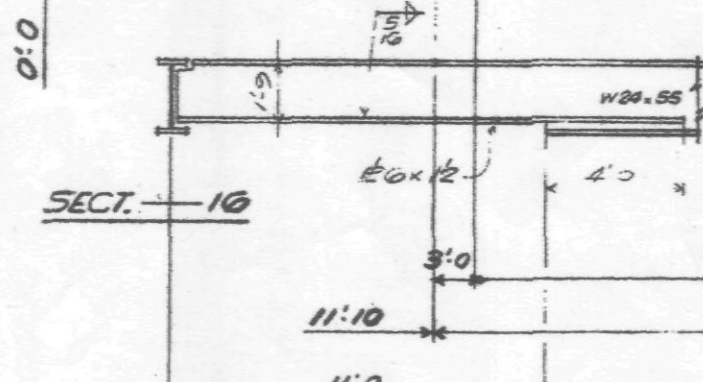
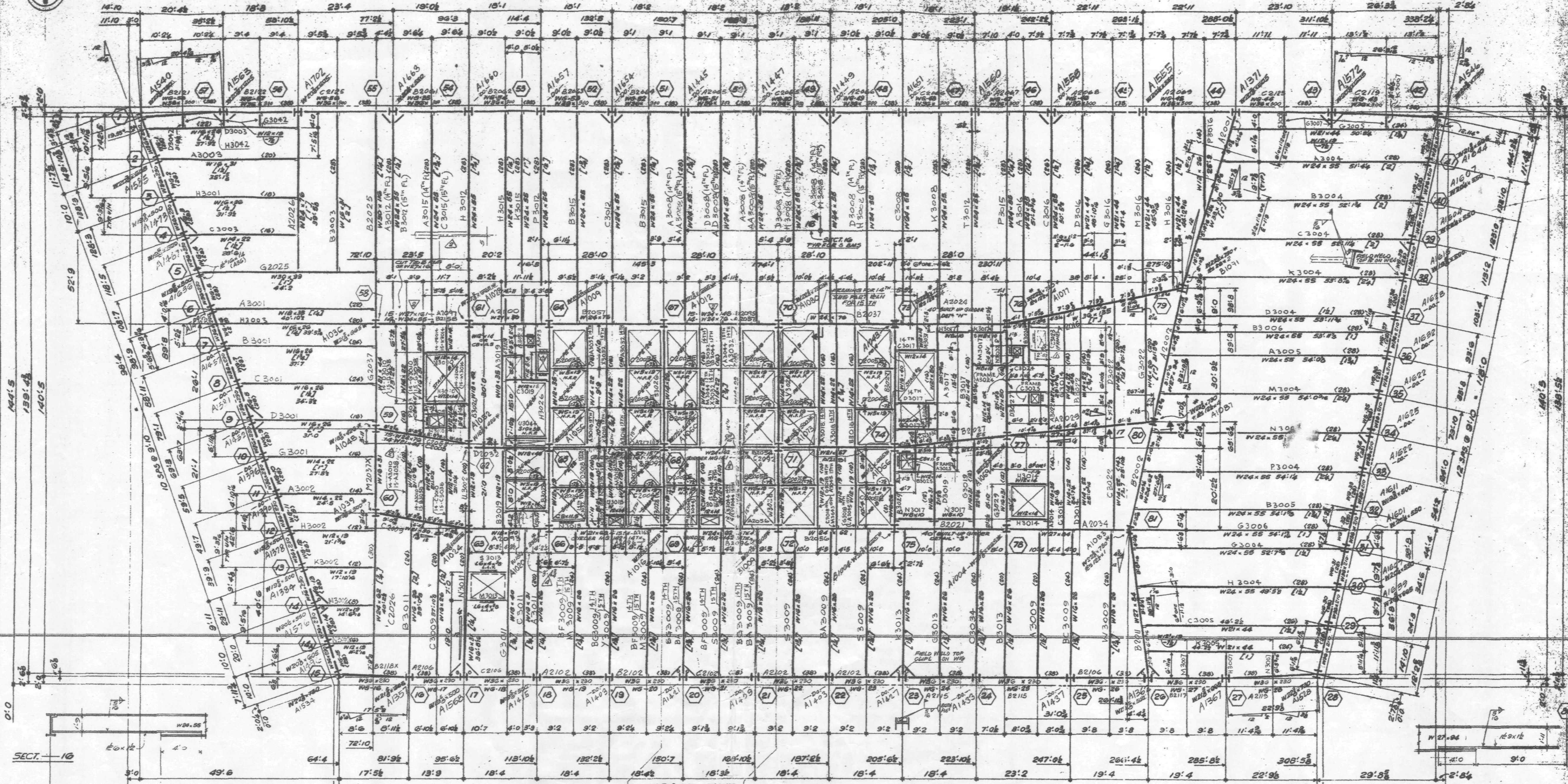


REVISIONS

NO.	DATE	DESCRIPTION
1		OPEN HOLES
2		PAINT
3		FIELD PAINT
4		INSPECTION

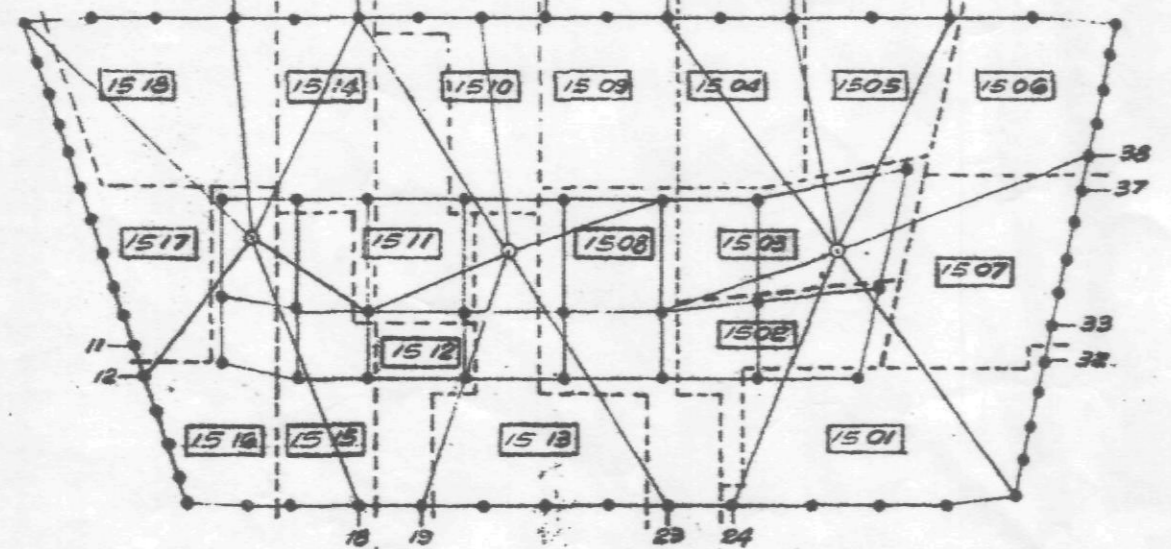
12" x 15" FLOOR FRAMING BEAM
7' WORLD TRADE CENTER
TISHMAN CONSTRUCTION
EMERY ROY & SONS INC.
IRWIN G. CANTOR INC.

DATE: 11/1/85
 DRAWN BY: [Signature]
 CHECKED BY: [Signature]
 PROJECT: [Signature]
 SHEET: 44/46

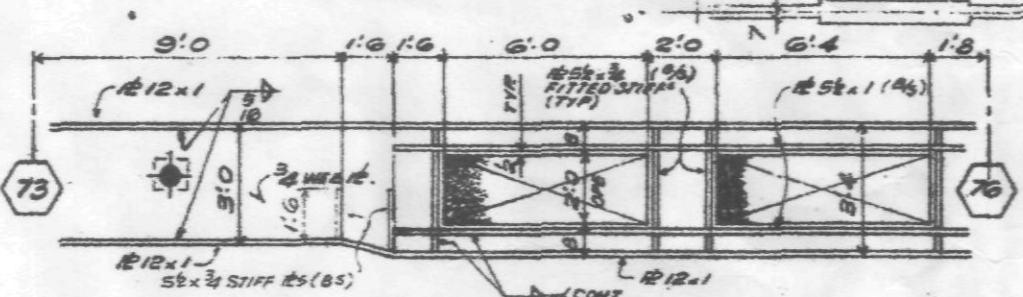


FOR KEY PLAN SHOWING CONNECTION LOCATIONS SEE DWG. 9100

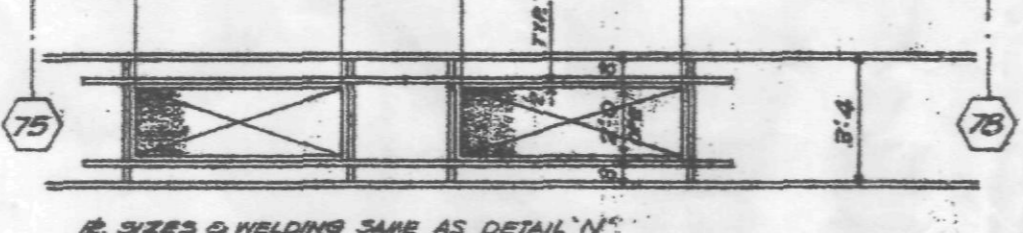
MARK	FL.	SECTION	W x H	W x H	W x H	W x H	DEPTH	STEEL GRADE
MS-141	14	30K 30K	7 1/2	13 1/2	15	GR. 50		
MS-142	14	30K 30K	10 1/2	13 1/2	15	GR. 50		
MS-151	15	15K 15K	7 1/2	32 1/2	39	GR. 50		
MS-152	15	15K 15K	7 1/2	31 1/2	36	A36		



KEY PLAN SHOWING SHIPPING DIVS.



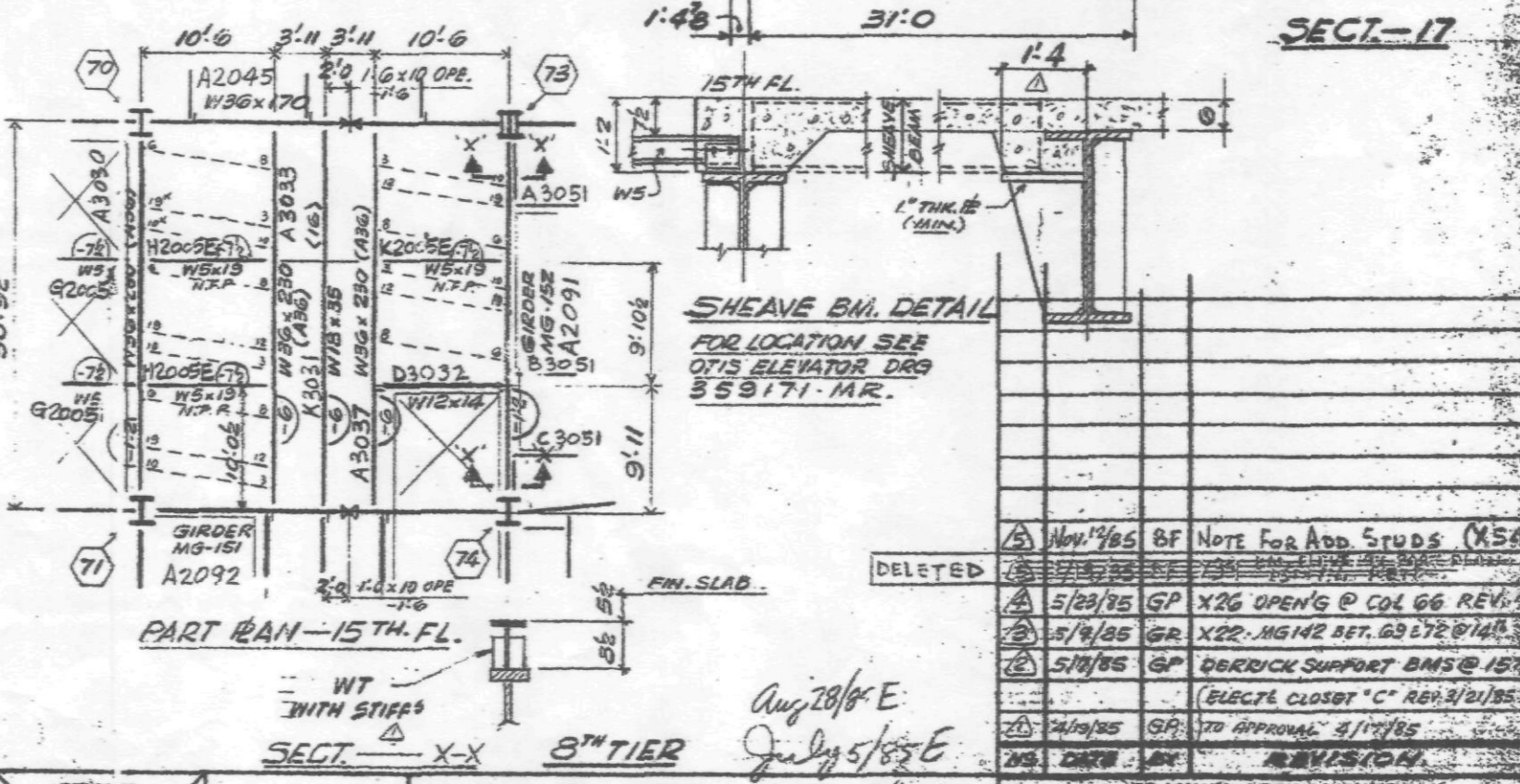
BUILT-UP GIRDER DETAIL - 'N'
GIRDER REACTION = 100 K
PROVIDE FULL DEPTH CONNECTION FOR ALL BEAMS BEARING INTO THE NORTH SIDE OF THE BUILT-UP GIRDER



BUILT-UP GIRDER DETAIL - 'S'
GIRDER REACTION = 75 K
PROVIDE FULL DEPTH CONNECTION FOR ALL BEAMS BEARING INTO THE SOUTH SIDE OF THE BUILT-UP GIRDER

FIN. CONG. SLAB 14TH FLOOR EL. 478.3
 FIN. CONG. SLAB 15TH FLOOR EL. 491.0
 TOP OF STEEL 5" BELOW FIN. CONG. SLAB U.M.
 ALL BEAMS SHALL BE ASTM A-572 GRADE 50 EXCEPT WIND GIRDERS INDICATED "WG" ON PLAN.
 ALL BEAMS W/ 19(7) & SPANDREL BRACE BEAMS W/ 19(7) WHICH SHALL BE ASTM A-36
 ALL COLS ARE A36 EXCEPT COLS WITH * WHICH ARE A572 GR. 50
 REINFC. FOR COLS WITH * UP TO 2" THK - A572 GR. 50
 OVER 2" THK - A588
 OVER 4" THK - A572 GR. 50
 OVER 6" THK - A588
 BEAM DRAWINGS & ELEVATIONS ARE GIVEN WITH RESPECT TO TOP OF STEEL.
 <- - - -> INDICATES 3/4" x 5 SHEAR STUDS, FIELD APPLIED
 [-] INDICATES CAMBER

FOR GENERAL NOTES - SEE E120
 CIV. SCHEDULES - E117, U17A
 SEE SCHEDULES FOR CONNECTIONS TO
 BEAMS AND WIND GIRDERS SEE CH. 1
 S FOR ALL ORIGINAL STUDS SEE CUST. DWG. 58 REKL



REVIS. NO.	DATE	DESCRIPTION
1	11/17	OPEN HOLES
2	11/17	PAIN
3	11/17	ERECTED BY
4	11/17	FIELD PART
5	11/17	INSPECTION

ZZ 15TH FLOOR FRAMING PLAN
 7 WORLD TRADE CENTER
 ERICSON CONSTRUCTION
 EMERY ROTH & SONS P.C.
 IRWIN G. CANTOR P.C.