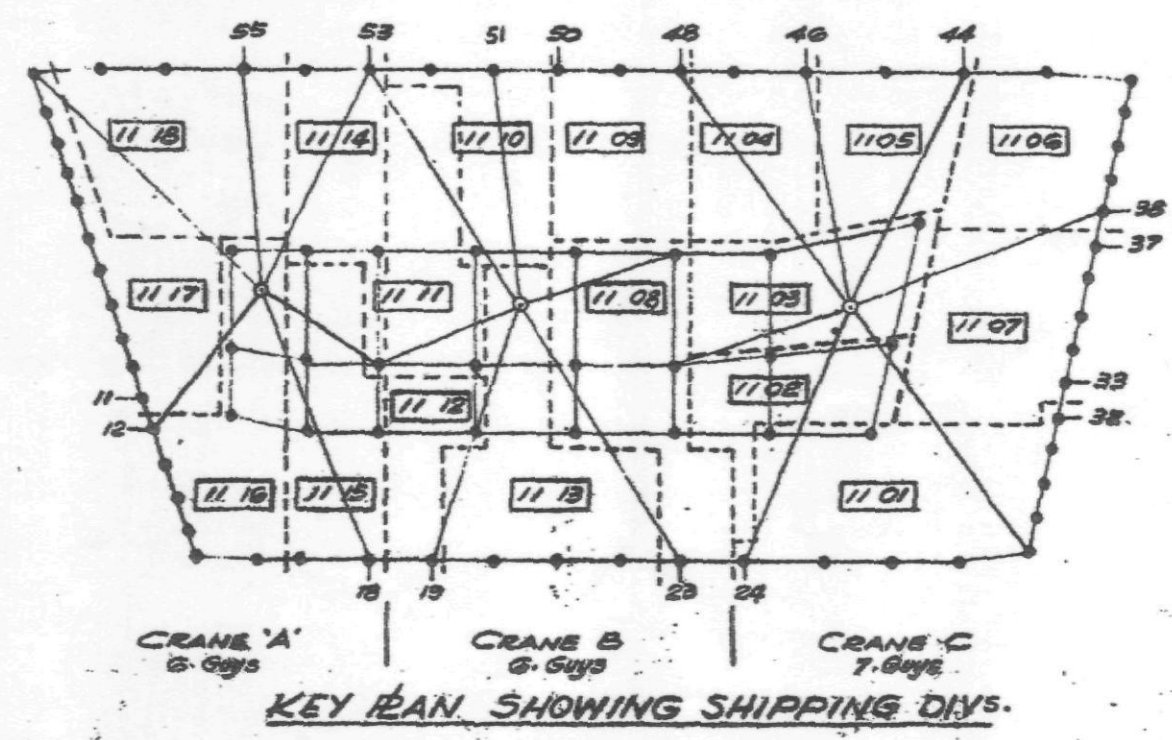


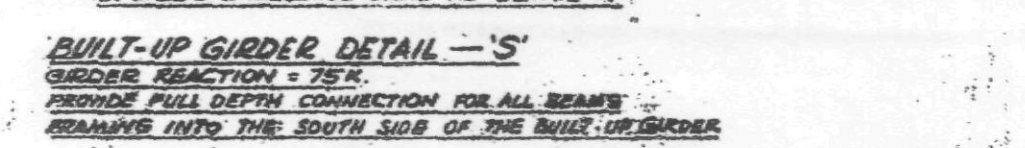
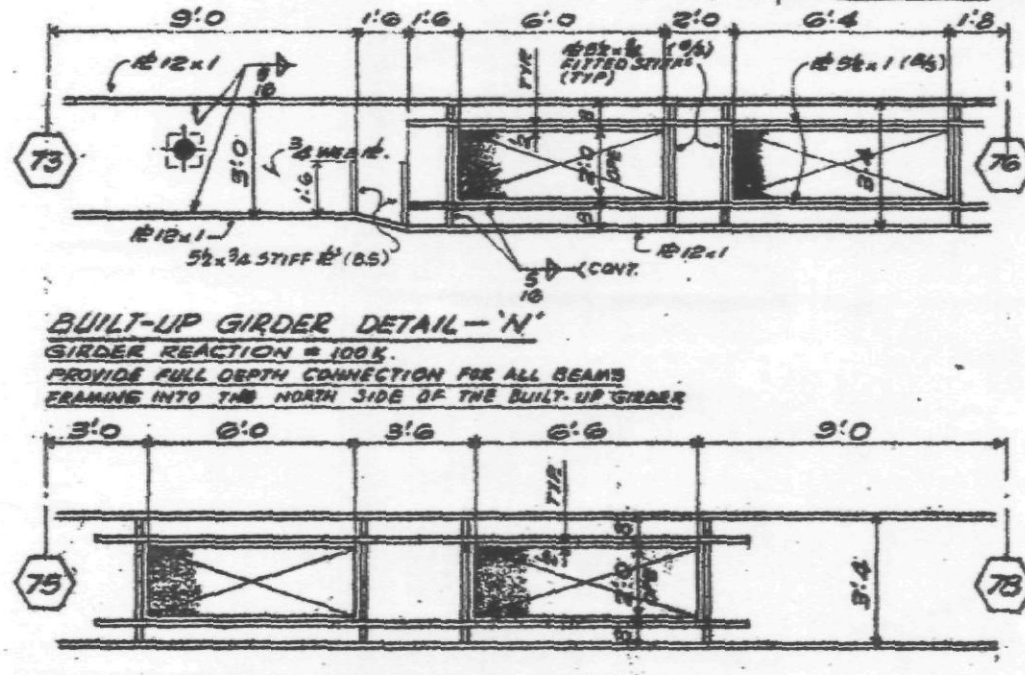
SECT-16

SECT-17

FOR KEY PLAN SHOWING CONNECTION LOCATIONS SEE DWG. 9100



KEY PLAN SHOWING SHIPPING DAYS



CIN. CONC. SLAB 10TH FLOOR EL. 427.3
 FIN. CONC. SLAB 11TH FLOOR EL. 440.0
 TOP OF STEEL 56" BELOW FIN. CONC. SLAB U.N.
 ALL BEAMS SHALL BE ASTM A572 GRADE 50 EXCEPT
 WIND GIRDERS INDICATED WGT ON PLAN.
 ALL BEAMS W12-19 (16) & SPANDREL BRACE BEAMS W12-19 (78)
 WHICH SHALL BE ASTM A36

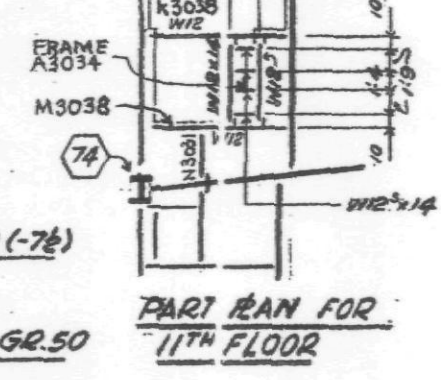
ALL COLS ARE A36 EXCEPT COLS WITH * WHICH ARE A572 GR.50
 REINFC. #3 FOR COLS WITH *, UP TO 2" THK. - A572 GR.50
 OVER 2" THK. - A588
 OVER 4" THK. - A572 GR.42
 OVER 6" THK. - A588

BEAM OPENING & ELEVATIONS, ARE GIVEN WITH
 RESPECT TO TOP OF STEEL.

(---) INDICATED #5 SHEAR STUDS, FIELD APPLIED
 [] INDICATED CAMBER

FOR GENERAL NOTES - SEE E120
 COL. SCHEDULE - SEE E117, L17A
 END SPANDREL TRUSS CONNECTIONS TO
 PERIMETER WIND GIRDERS, SEE C11.1

FOR ADDITIONAL STUDS SEE CUST. DWG. 58 REV. A



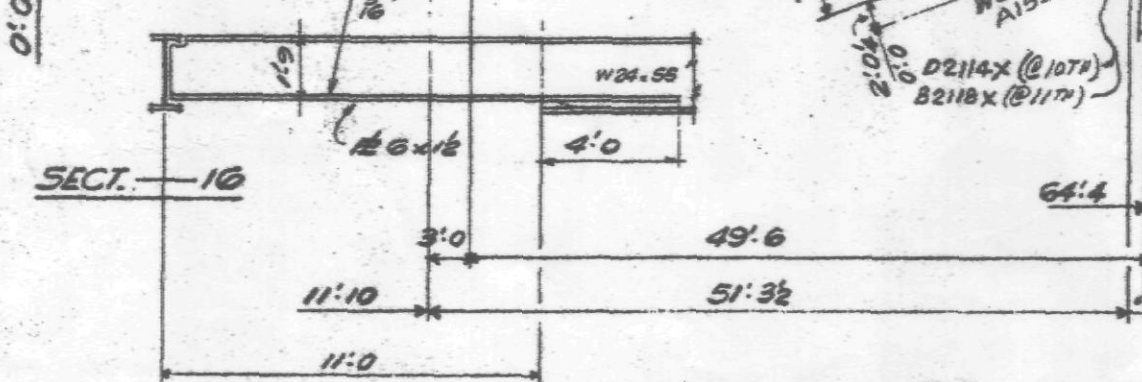
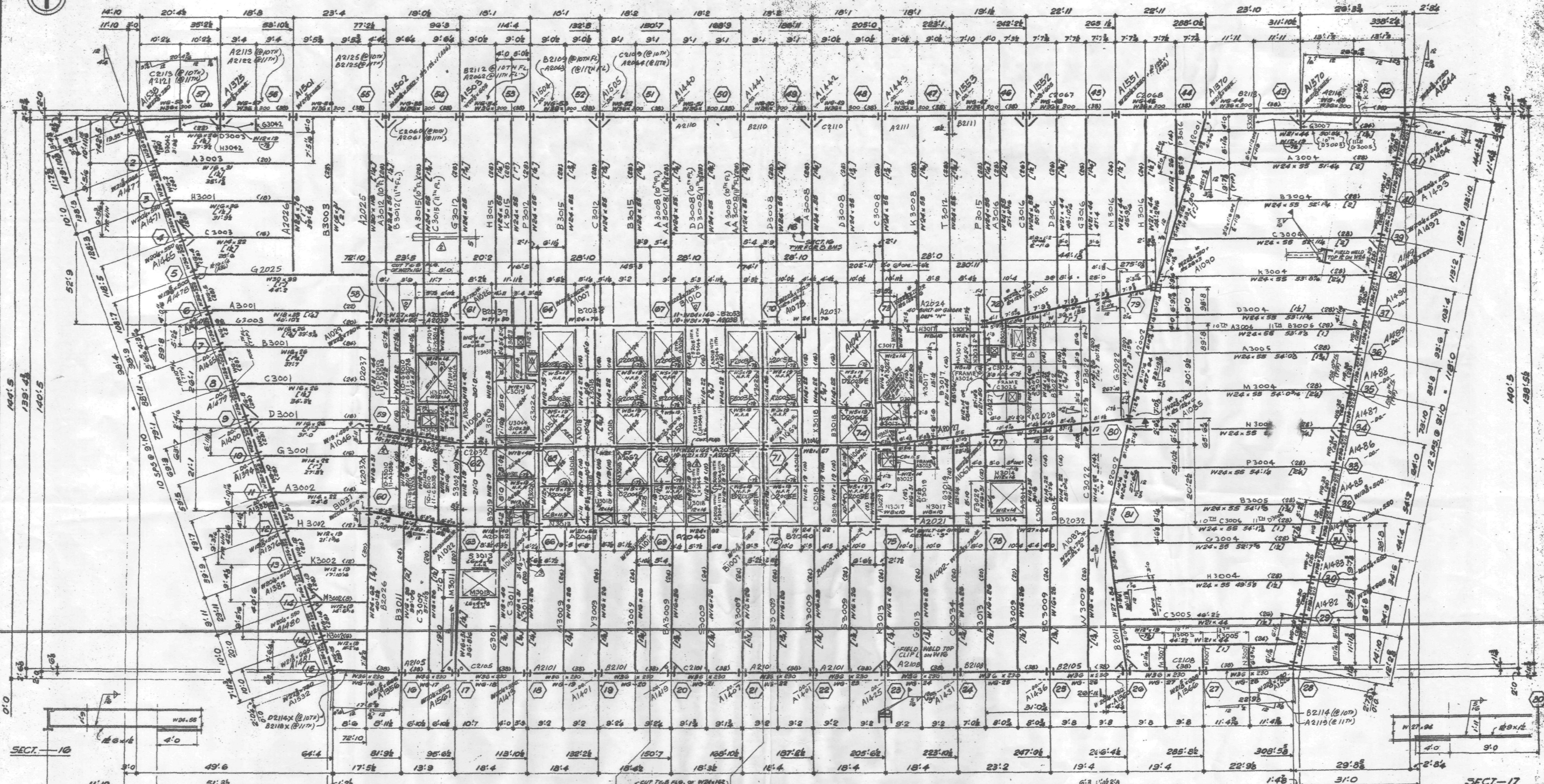
PART PLAN FOR 11TH FLOOR

REV	BY	DATE	DESCRIPTION
1	GP		OPEN HOLES
2	GP		FIELD
3	GP		FRAMING
4	GP		INSPECTION

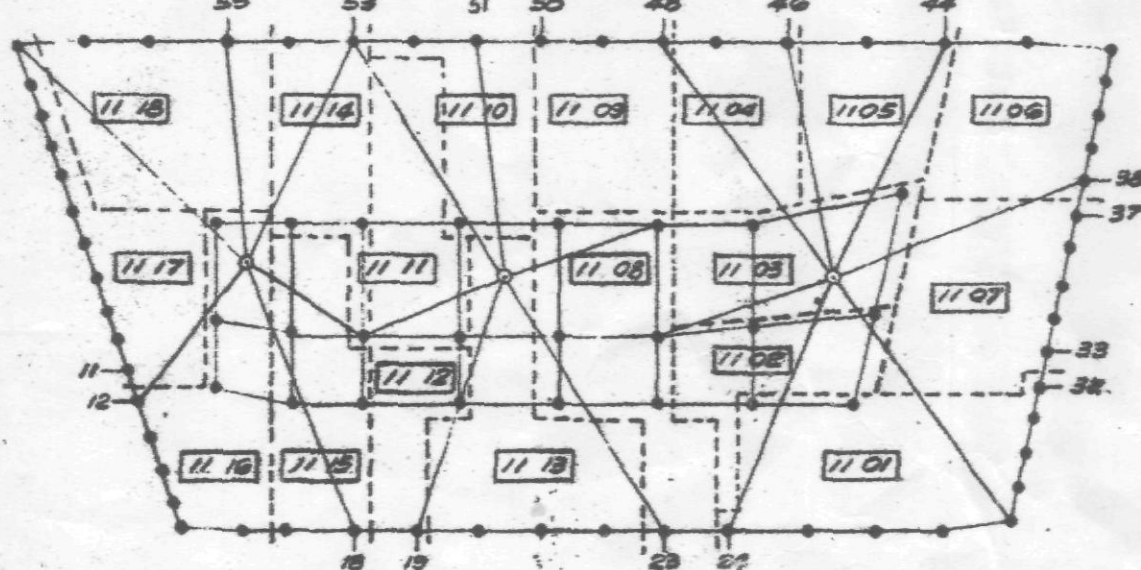
NO.	DATE	BY	REVISION
1	5/23/85	GP	NOTE FOR ADD. STUDS (X54)
2	5/23/85	GP	X26 OPEN & COLS - REV.
3	5/23/85	GP	DERICK SUPPORT BMS @ 11TH
4	5/23/85	GP	(RECT. CLOSURE) C' REV. 3/1/85
5	5/23/85	GP	TO APPROX. 4/17/85
6	5/23/85	GP	REVISION

10" x 11" FLOOR FRAMING PLAN
 7 WORLD TRADE CENTER
 TISHMAN CONSTRUCTION
 EMERY ROTH & SONS, INC.
 IRWIN S. CANTOR P.C.

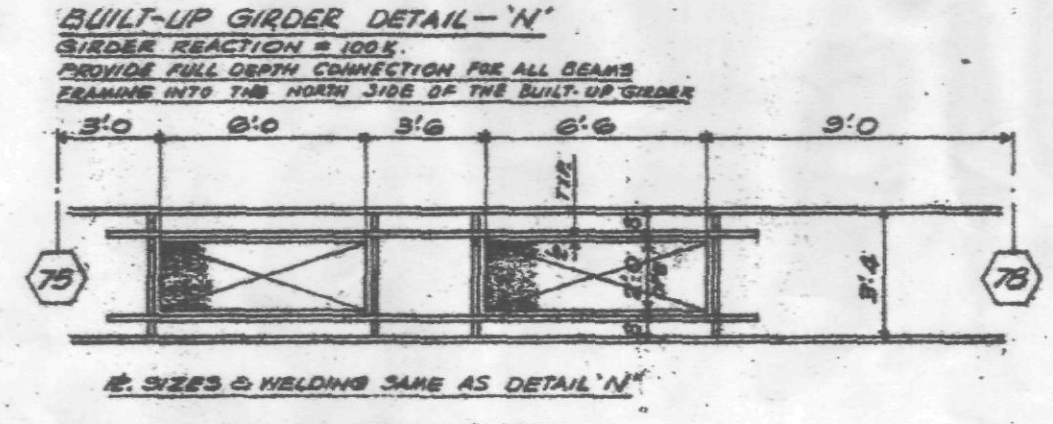
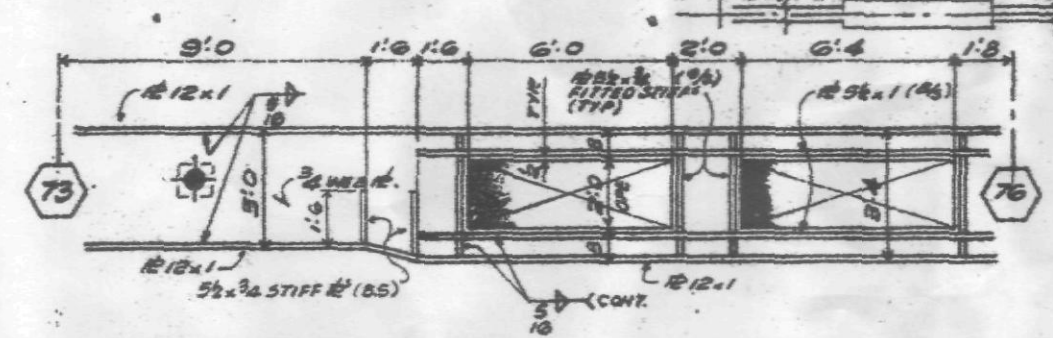
FRANKEL STEEL LIMITED
 221 ATTWELL DRIVE UNIT 1, REXDALE, ONTARIO, M9W 1P4
 MADE BY: GP DATE: 5/23/85 CUD. BY: JLM DATE: 5/23/85
 CONT. NO. 84-15 SHEET 510/11



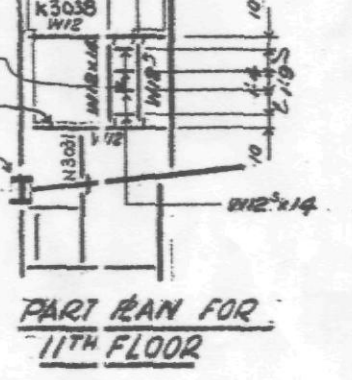
FOR KEY PLAN SHOWING CONNECTION LOCATIONS SEE DWG. 9100



KEY PLAN SHOWING SHIPPING DIVS.



FIN. CONG. SLAB 10TH FLOOR EL. 421.3
 FIN. CONG. SLAB 11TH FLOOR EL. 440.0
 TOP OF STEEL 5/8" BELOW FIN. CONG. SLAB U.M.
 ALL BEAMS SHALL BE ASTM A-572 GRADE 50 EXCEPT WIND GIRDERS INDICATED 'WS' ON PLAN.
 ALL BEAMS W/ 19(-7) & SPANDREL BRACE BEAMS W/ 12.19(-7) WHICH SHALL BE ASTM A-36
 ALL COLS ARE A36 EXCEPT COLS WITH * WHICH ARE A572 GR. 50
 REIN. # 4 FOR COLS WITH * UP TO 2" THK - A572 GR. 50
 OVER 2" THK - A588
 OVER 4" THK - A572 GR. 42
 OVER 6" THK - A588
 BEAM OPENINGS & ELEVATIONS ARE GIVEN WITH RESPECT TO TOP OF STEEL.
 [---] INDICATES # 5 SHEAR STUDS, FIELD APPLIED.
 [---] INDICATES CAMBER
 FOR GIRDER NOTES - SEE E120
 COL SCHEDULE - E117, U17A
 SEE SPANDREL BRACE CONNECTIONS TO PERM. PLAN & WIND GIRDERS SEE CIV. 1
 FOR A TYPICAL STUDS SEE CUST. DWG. 52 REV. A



REV	BY	DATE	DESCRIPTION

10TH FLOOR FRAMING PLAN
 7 WORLD TRADE CENTER
 TISHMAN CONSTRUCTION
 EMERY ROTH & SONS P.C.
 IRWIN S. GANTOR P.C.
