

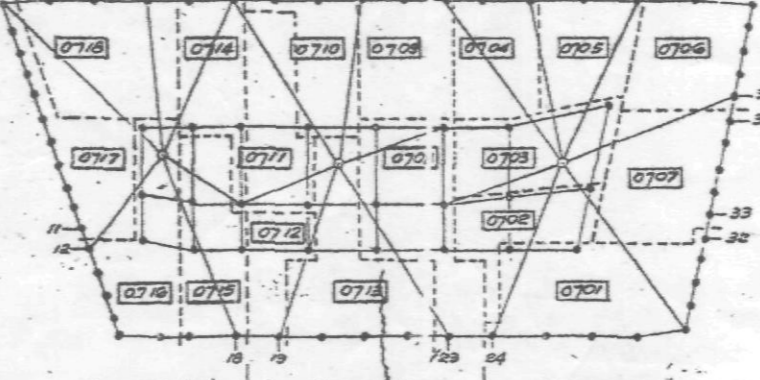
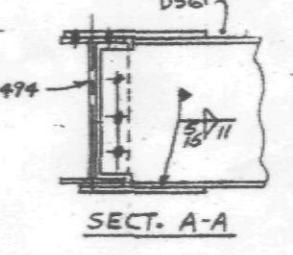
- NOTES**
1. SLAB TO BE 4" (103" x 5") THICK STONE CONCRETE HAVING A COMPRESSIVE STRENGTH OF 3000 PSI AT 28 DAYS. PLACE OVER 1" REIN. 18 GAUGE CORRUGATED METAL DECK REINFORCED WITH 6x6" @ 12" x 8x8" @ 12" W-M. W-M. @ 12" ON PLAN. WITH CONC. CURB 4" x 8" @ 12" ON TOP OF PLAN.
 2. TOP OF STEEL TO BE AT ELEVATION 366'-4" W-M. @ 12" ON PLAN THIS (EL.).
 3. ALL BEAMS SHALL BE ASTM A-572, GRADE 50 STEEL. W-M. @ 12" ON PLAN.
 4. FOR TYPICAL SUPERSTRUCTURE DETAILS SEE DWGS. 5-28 AND 5-29. FOR SUPERSTRUCTURE GENERAL NOTES SEE DWG. 5-20.
 5. WIND UMBERS INDICATED "W" ON PLAN AND SHALL BE OF ASTM A-36 STEEL. FOR FORCES ON EXTERIOR WIND GIRDERS, SEE DWGS. 5-19 AND 5-20. FOR FORCES ON INTERIOR WIND GIRDERS, SEE DWGS. 5-21.
 6. FOR SIZE AND DETAILS OF PLATE GIRDERS (INDICATED "RG") AND TRUSSES 1, 2, AND 3 SEE DWGS. 5-21, 5-22, AND 5-23.
 7. JOIST CONNECTIONS TO BE 1 1/2" x 1 1/2" IRON INDICATED THROUGH PLAN AND EQUALLY SPACED 4'-0".
 8. FOR WALL SUPPORTS AT ELEVATIONS SEE SECT. ON E2.
 9. FLOOR SLAB SHALL BE SHORED AS PER MANUFACTURER'S REQUIREMENTS.
 10. EXTEND ALL REIN. TO EDGE OF SLAB.
 11. BARS TO BE LAPPED SPLICED IN A STAGGERED FASHION.
 12. FOR DETAIL OF DEPRESSIONED SLAB SEE ARCH. DWG.

ERECTOR NOTE
 SEE FIELDWORK DWG. PW 24 FOR LOCATION & DETAILS OF FIELDWELDED OR SPLICED JOINTS NORTH & SOUTH DIRECTIONS. THE DIM. @ 12" FOR ALL OTHER FIELDWELDED SPLICED.

NOTE
 ALL DIMENSIONS ON NORTH & SOUTH WALL ARE TO TOP OF STEEL. EL. 360'-4"

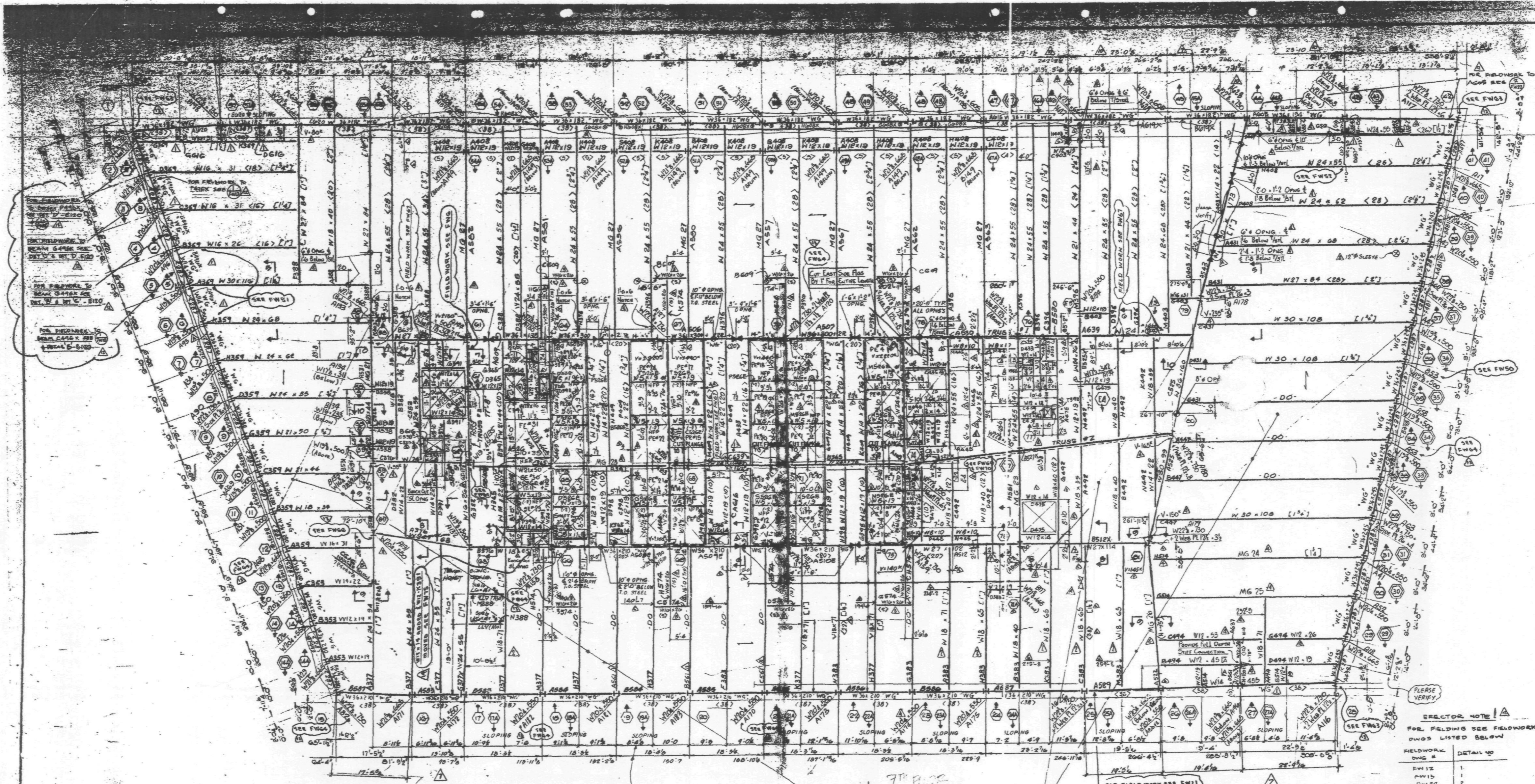
7TH FLOOR
 8" CONC. SLAB WITH WALKER DUCT SYSTEM REIN. W/ 6" @ 10" BY EN. #1 @ 10" IN W. STEEL BARS TO HAVE 2" CONC. ENCASUREMENT. SEE DET. ON DWG. 5-24A

- LEGEND**
- COLUMN
 - TRUSS MEMBER
 - COLUMN ABOVE
 - COLUMN OR TRUSS MEMBER BELOW
 - |— INDICATES CAMBER
 - |— INDICATES DECK SPAN
 - NFP. INDICATED BEAMS WITH NO FIREPROOFING



NO.	DATE	BY	DESCRIPTION OF REVISION
1	July 26, 1955	WTC	NOTE 12 IS ADDED
2	July 26, 1955	WTC	NOTE 9 - R. 1, 5 WTS (10) HAVE ADDED
3	July 26, 1955	WTC	REVISE DIM. SIZE (CORNER) LAGS, NOT FIELDWORK
4	July 26, 1955	WTC	FIELDWORK REVISIONS
5	July 26, 1955	WTC	ADDED BEAM MARKS & FIELD WORK
6	July 26, 1955	WTC	REVISED TO SHOW CONCRETE APPROXIMATE
7	July 26, 1955	WTC	REVISED TO SHOW WALKER DUCT SYSTEM
8	July 26, 1955	WTC	CUSTOMER GENERAL REVISION "X10"
9	July 26, 1955	WTC	REVISED NORTH & SOUTH CORNER "X10"
10	July 26, 1955	WTC	REVISED TO SHOW GENERAL REVISION "X11"
11	July 26, 1955	WTC	GENERAL REVISIONS "X2"
12	July 26, 1955	WTC	REVISED LOCATION OF WALKER DUCT SYSTEM
13	July 26, 1955	WTC	CUSTOMER GENERAL REVISIONS "X3"
14	July 26, 1955	WTC	CUSTOMER GENERAL REVISIONS "X4"

7TH FLOOR FRAMING PLAN
 WORLD TRADE CENTER
 TISHMAN CONSTRUCTION
 EMERY, BROWN & ASSOCIATES
 DATE: 7-26-55
 DRAWN BY: WTC
 CHECKED BY: WTC
 CONT. NO. 84-15
 SHEET NO. E7



- NOTES**
1. SLAB TO BE 5" (3" + 2") THICK STONE CONCRETE HAVING A COMPRESSIVE STRENGTH OF 3500 PSI AT 28 DAYS. PLACED OVER 3" DEEP 18 GAUGE COMPOSITE METAL DECK REINFORCED WITH 1/2" x 12" x 12" W/18" ON PLAN.
 2. TOP OF STEEL TO BE AT ELEVATION 386.4' UNLESS OTHERWISE NOTED.
 3. ALL BEAMS SHALL BE ASTM A-572, GRADE 50 STEEL UNLESS OTHERWISE NOTED.
 4. FOR TYPICAL SUPERSTRUCTURE DETAILS SEE DWGS. S-28 AND S-29. FOR SUPERSTRUCTURE GENERAL, REFER TO DWG. S-20.
 5. WELD ENDERS INDICATED "WE" ON PLAN AND SHALL BE OF ASTM A-572 STEEL. FOR FORCES ON EXTERIOR WELD ENDERS, SEE DWGS. S-19 AND S-20. FOR FORCES ON INTERIOR WELD ENDERS, SEE DWG. S-21.
 6. FOR SIZES AND DETAILS OF PLATE ENDERS (INDICATED "PE") AND THROUS 1, 2, AND 3 SEE DWGS. S-22, S-23, AND S-24.
 7. BEAM CONNECTIONS TO BE 1" x 1" W/18" UNLESS OTHERWISE NOTED ON PLAN AND EQUALLY SPACED 8" O.C.
 8. **FIELD WELDED SPLICES** SHALL SUPPORT BE AT SLAB JOINTS SEE SECT. ON ET
 9. FLOOR SLAB SHALL BE SHORED AS PER MANUFACTURER'S REQUIREMENTS.
 10. EXTEND ALL REINFT TO EDGE OF SLAB.
 11. BARS TO BE LAPPED SPLICED IN A STAGGERED FASHION.
 12. FOR DETAIL OF DEPRESSION SLAB SEE ARCH. DWG.

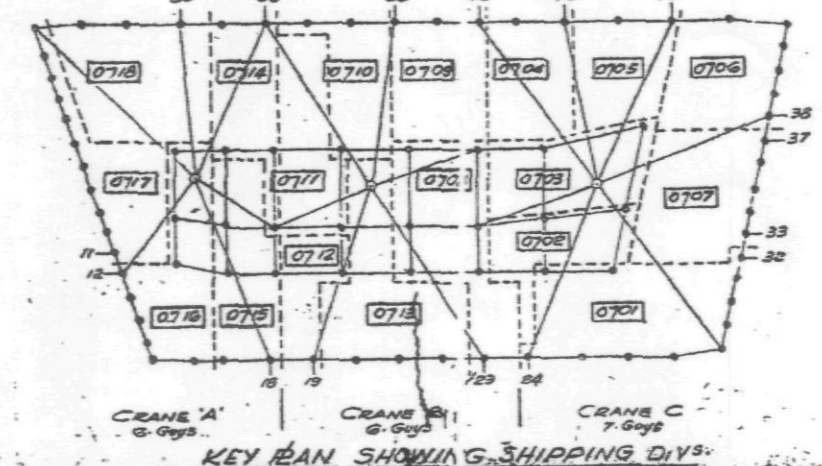
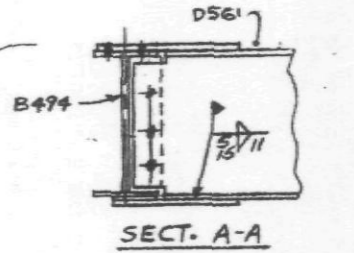
DIAPHRAGM WALL NOT COMPLETE

ERECTOR NOTE
 SEE FLOWWORK DWG PW 224 FOR LOCATION & DETAILS OF FIELD WELDED OR SPLICES ON NORTH & SOUTH WALLS. FIELD WELDED SPLICES SHALL BE WITH 2" CONCRETE ENCASEMENT. SEE DET. ON DWG. S-24A

NOTE
 ALL DIMENSIONS ON NORTH & SOUTH WALL ARE TO TOP OF STEEL. EL. 386.4

7" FLOOR
 8" CONC SLAB W/ 18" WELDED SYSTEM REINFT W/ 1/2" x 12" x 12" W/18" STEEL BARS TO HAVE 2" CONCRETE ENCASEMENT. SEE DET. ON DWG. S-24A

- LEGEND**
- COLUMN
 - TRUSS MEMBER
 - COLUMN ABOVE
 - COLUMN OR TRUSS MEMBER BELOW
 - [-] INDICATES CAMBER
 - - - INDICATES DECK SPAN
 - N.F.P. INDICATES BEAMS WITH NO FLOORROOFING



NO.	DATE	DESCRIPTION
1	JULY 20/85	NOTE 12 ADDED
2	AUG 14/85	REVISED PLAN & R.I. & WTS (ETC) HAVE BEEN
3	SEP 10/85	REVISED PLAN & R.I. & WTS (ETC) HAVE BEEN
4	SEP 10/85	REVISED PLAN & R.I. & WTS (ETC) HAVE BEEN
5	SEP 10/85	REVISED PLAN & R.I. & WTS (ETC) HAVE BEEN
6	SEP 10/85	REVISED PLAN & R.I. & WTS (ETC) HAVE BEEN
7	SEP 10/85	REVISED PLAN & R.I. & WTS (ETC) HAVE BEEN
8	SEP 10/85	REVISED PLAN & R.I. & WTS (ETC) HAVE BEEN
9	SEP 10/85	REVISED PLAN & R.I. & WTS (ETC) HAVE BEEN
10	SEP 10/85	REVISED PLAN & R.I. & WTS (ETC) HAVE BEEN
11	SEP 10/85	REVISED PLAN & R.I. & WTS (ETC) HAVE BEEN
12	SEP 10/85	REVISED PLAN & R.I. & WTS (ETC) HAVE BEEN
13	SEP 10/85	REVISED PLAN & R.I. & WTS (ETC) HAVE BEEN
14	SEP 10/85	REVISED PLAN & R.I. & WTS (ETC) HAVE BEEN
15	SEP 10/85	REVISED PLAN & R.I. & WTS (ETC) HAVE BEEN
16	SEP 10/85	REVISED PLAN & R.I. & WTS (ETC) HAVE BEEN
17	SEP 10/85	REVISED PLAN & R.I. & WTS (ETC) HAVE BEEN
18	SEP 10/85	REVISED PLAN & R.I. & WTS (ETC) HAVE BEEN
19	SEP 10/85	REVISED PLAN & R.I. & WTS (ETC) HAVE BEEN
20	SEP 10/85	REVISED PLAN & R.I. & WTS (ETC) HAVE BEEN

7" FLOOR FRAMING PLAN
 WORLD TRADE CENTER
 TISHMAN CONSTRUCTION
 220 AVENUE OF THE AMERICANS, NEW YORK, N.Y. 10028
 DRAWN BY: [] DATE: [] CHECKED BY: [] DATE: []
 SHEET NO. 84-15 SHEET E7