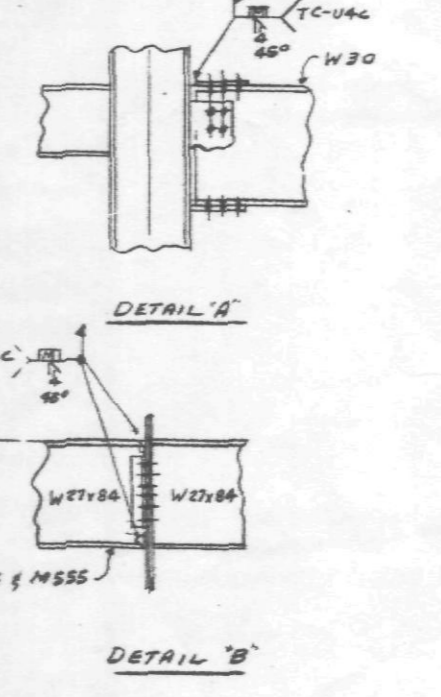


4<sup>TH</sup> FL FRAMING PLAN

- NOTES**
- SLAB TO BE 6" THICK STONE CONCRETE HAVING A COMPRESSIVE STRENGTH OF 3000 PSI AT 28 DAYS, PLACED OVER 3" DEEP 20 GAUGE COMPOSITE METAL DECK REINFORCED WITH D75 @ 18" x W14 @ 18".
  - TOP OF STEEL TO BE AT ELEVATION 348'-0" O.D.B. ON PLAN TRIM (EL. ---).
  - ALL BEAMS SHALL BE ASTM A-572, GRADE 50 STEEL, U.O.W.
  - FOR TYPICAL CONNECTIONS DETAILS SEE DWGS. S-24 AND S-24A. FOR SUPERSTRUCTURE GENERAL NOTES SEE DWG. S-28.
  - WIND GRIDS INDICATED "WG" ON PLAN AND SHALL BE OF ASTM A-58 STEEL. FOR FORCES ON EXTERIOR WIND GRIDS, SEE DWGS. S-19 AND S-20. FOR FORCES ON INTERIOR WIND SYSTEMS, SEE DWG. S-21.
  - FLOOR SLAB SHALL BE SHORED AS PER MANUFACTURER'S REQUIREMENTS.
  - FOR WALL SUPPORT BY AT ELEVATORS SEE SECTS. ON E2
  - ALL BEAMS W5x14 AND SPANDREL BEAM BEAMS W12x14 (EL. 347'-10") TO BE ASTM A-36 STEEL
  - PIPE SIZES OF GIRDER (INDICATED "MG") SEE DWG. E73

**LEGEND**

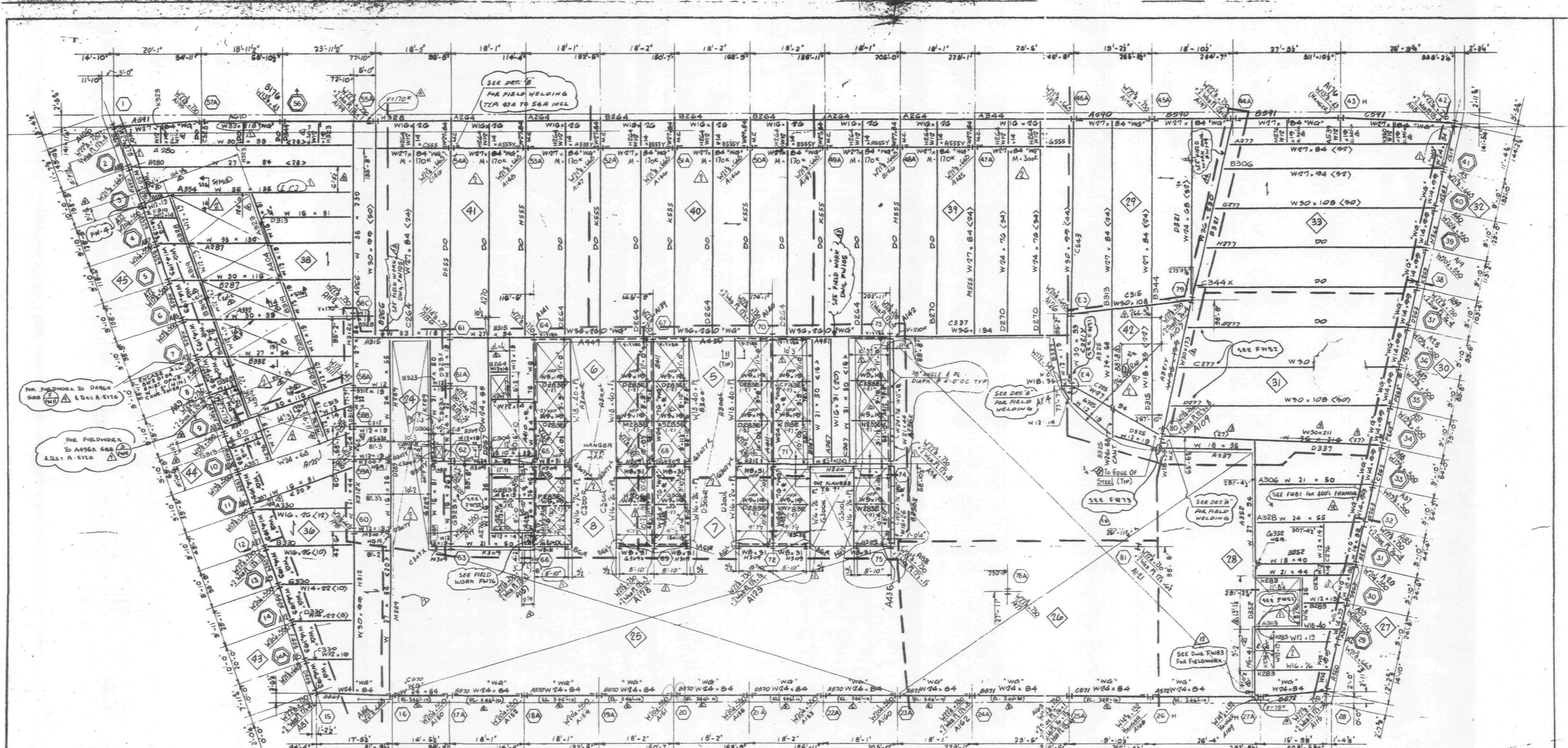
- COLUMN OR HANGER
- △ TRUSS MEMBER
- ◇ INDICATES HANGER
- ⊕ TRUSS MEMBER ABOVE
- INDICATES GIRDER CONNECTORS
- - - INDICATES CAMBER
- M.L. INDICATES THE ALL MOMENT CONNECTION AND CONNECTION
- SHALL DEVELOP FULL CAPACITY OF MEMBER MEMBER
- Δ "WEP" INDICATES NO FIREPROOFING
- INDICATES DIRECTION OF DECK SPAN



ERECTOR NOTE		
FOR FIELD WELDING SEE FIELDWORK CHAS LIST	DATE	REV.
MEMBER DWG #	DETAIL NO	DWG NO
FW11	Z.3	03
FW13		
FW109		

- REVISIONS**
- | NO. | DESCRIPTION              | DATE |
|-----|--------------------------|------|
| 1   | REVISED TO SUIT APPROVAL |      |
| 2   | REVISED TO SUIT APPROVAL |      |
| 3   | REVISED TO SUIT APPROVAL |      |
| 4   | REVISED TO SUIT APPROVAL |      |
| 5   | REVISED TO SUIT APPROVAL |      |
| 6   | REVISED TO SUIT APPROVAL |      |
| 7   | REVISED TO SUIT APPROVAL |      |
| 8   | REVISED TO SUIT APPROVAL |      |
| 9   | REVISED TO SUIT APPROVAL |      |
| 10  | REVISED TO SUIT APPROVAL |      |
| 11  | REVISED TO SUIT APPROVAL |      |
| 12  | REVISED TO SUIT APPROVAL |      |
| 13  | REVISED TO SUIT APPROVAL |      |
| 14  | REVISED TO SUIT APPROVAL |      |
| 15  | REVISED TO SUIT APPROVAL |      |
| 16  | REVISED TO SUIT APPROVAL |      |
| 17  | REVISED TO SUIT APPROVAL |      |
| 18  | REVISED TO SUIT APPROVAL |      |
| 19  | REVISED TO SUIT APPROVAL |      |
| 20  | REVISED TO SUIT APPROVAL |      |

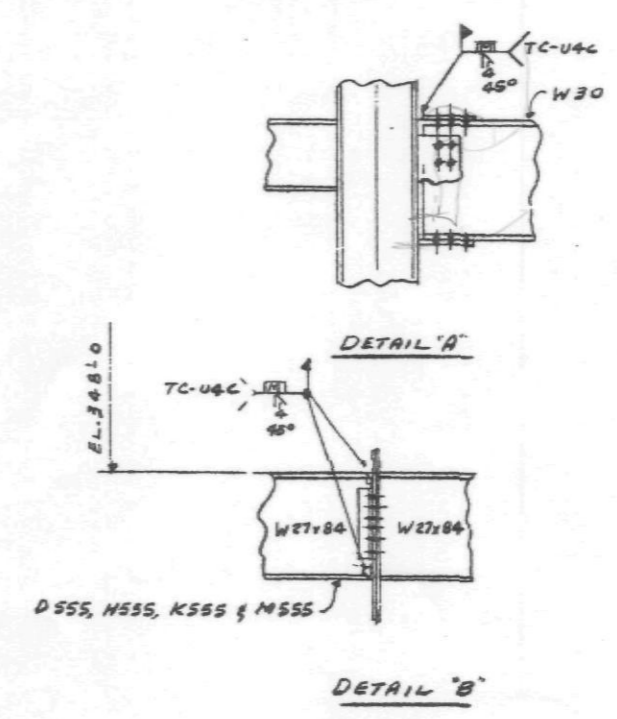
4 <sup>TH</sup> FLOOR FRAMING PLAN		FRANKEL STEEL LIMITED	
7 WORLD TRADE CENTER		228 ATTWELL DRIVE UNIT 1, MISSISSAUGA, ONTARIO L4R 3R3	
CLIENT	DATE	CHECKED BY	DATE
TERRACON CONSTRUCTION		IRWIN G. CANTOR	
EMERY BORN & SONS INC.	ARCHITECT	CONT. NO.	84-15 SHEET E-1
IRWIN G. CANTOR INC.	ENGINEER		



4<sup>TH</sup> FL FRAMING PLAN

- NOTES**
1. SLAB TO BE 6" (5") THICK STONE CONCRETE HAVING A COMPRESSIVE STRENGTH OF 3000 PSI AT 28 DAYS, PLACED OVER 3" DEEP 20 GAUGE COMPOSITE METAL DECK REINFORCED WITH 1/2" x 1/2" x 1/2" W-4'S.
  2. TOP OF STEEL TO BE AT ELEVATION 580'-0" U.M.W. ON PLAN THIS ELEV. ---
  3. ALL BEAMS SHALL BE ASTM A-36, GRADE 50 STEEL U.M.W.
  4. FOR TYPICAL SUPERSTRUCTURE DETAILS SEE DWGS. 5-24 AND 5-26A. FOR SUPERSTRUCTURE GENERAL NOTES SEE DWG. 5-20.
  5. WIND LOADS INDICATED "W5" ON PLAN SHALL BE OF ASTM A-36 STEEL. FOR FORCES ON EXTERIOR WIND SIDING, SEE DWGS. 5-19 AND 5-20. FOR FORCES ON INTERIOR WIND SIDING, SEE DWG. 5-21.
  6. FLOOR SLAB SHALL BE SHORED AS PER MANUFACTURER'S REQUIREMENTS.
  7. FOR WALL SUPPORT R. AT ELEVATORS SEE SECT. ON E2.
  8. ALL BEAMS W 52 x 14 AND SPANDREL GRADE BEAMS W 12 x 14 (EL. 547'-10") TO BE ASTM A-36 STEEL.
  9. PIPE SIZES OF GIRDERS (INDICATED "MG") SEE DWG. E12.

- LEGEND**
- CO. JMN OR HANGER
  - ⊕ TRUSS MEMBER
  - H INDICATES HANGER
  - ⊕ TRUSS MEMBER ABOVE
  - INDICATES SHEAR CONNECTORS
  - INDICATES CAMBER
  - M.C. INDICATES THE REAL MEMBER DIRECTION AND CONNECTION SHALL DEVELOP FULL CAPACITY OF INTERFERING MEMBER
  - NO FIREPROOFING INDICATES DIRECTION OF DECK SPAN



**ERECTOR NOTE**

FOR FIELD WELDING SEE FIELDWORK DWGS LISTED BELOW

FIELDWORK DWG.	DETAIL NO.	DETAIL NO.
FW11	2.3	DWG. NO.
FW52		
FW73		
FW109		

**REVISIONS**

NO.	DATE	DESCRIPTION OF REVISION
1	July 2/85	FIELDWORK DWGS ADDED (X59)
2	May 20/85	FIELDWORK DWGS ADDED NEAR COL. 58C & 73
3	May 20/85	FIELDWORK DWGS ADDED NEAR COL. 10 BY 42A
4	May 20/85	W 18 x 40 IN W/OUT RIGID
5	May 20/85	NO WELD OF HANGER END ADDED
6	May 20/85	W/OUT RIGID
7	May 20/85	REVISED TO SUIT APPROVAL
8	May 20/85	REVISED TO SUIT APPROVAL
9	May 20/85	REVISED TO SUIT APPROVAL
10	May 20/85	REVISED TO SUIT APPROVAL
11	May 20/85	REVISED TO SUIT APPROVAL
12	May 20/85	REVISED TO SUIT APPROVAL
13	May 20/85	REVISED TO SUIT APPROVAL
14	May 20/85	REVISED TO SUIT APPROVAL
15	May 20/85	REVISED TO SUIT APPROVAL
16	May 20/85	REVISED TO SUIT APPROVAL
17	May 20/85	REVISED TO SUIT APPROVAL
18	May 20/85	REVISED TO SUIT APPROVAL
19	May 20/85	REVISED TO SUIT APPROVAL
20	May 20/85	REVISED TO SUIT APPROVAL
21	May 20/85	REVISED TO SUIT APPROVAL
22	May 20/85	REVISED TO SUIT APPROVAL
23	May 20/85	REVISED TO SUIT APPROVAL
24	May 20/85	REVISED TO SUIT APPROVAL
25	May 20/85	REVISED TO SUIT APPROVAL
26	May 20/85	REVISED TO SUIT APPROVAL
27	May 20/85	REVISED TO SUIT APPROVAL
28	May 20/85	REVISED TO SUIT APPROVAL
29	May 20/85	REVISED TO SUIT APPROVAL
30	May 20/85	REVISED TO SUIT APPROVAL
31	May 20/85	REVISED TO SUIT APPROVAL
32	May 20/85	REVISED TO SUIT APPROVAL
33	May 20/85	REVISED TO SUIT APPROVAL
34	May 20/85	REVISED TO SUIT APPROVAL
35	May 20/85	REVISED TO SUIT APPROVAL
36	May 20/85	REVISED TO SUIT APPROVAL
37	May 20/85	REVISED TO SUIT APPROVAL
38	May 20/85	REVISED TO SUIT APPROVAL
39	May 20/85	REVISED TO SUIT APPROVAL
40	May 20/85	REVISED TO SUIT APPROVAL
41	May 20/85	REVISED TO SUIT APPROVAL
42	May 20/85	REVISED TO SUIT APPROVAL
43	May 20/85	REVISED TO SUIT APPROVAL
44	May 20/85	REVISED TO SUIT APPROVAL
45	May 20/85	REVISED TO SUIT APPROVAL
46	May 20/85	REVISED TO SUIT APPROVAL
47	May 20/85	REVISED TO SUIT APPROVAL
48	May 20/85	REVISED TO SUIT APPROVAL
49	May 20/85	REVISED TO SUIT APPROVAL
50	May 20/85	REVISED TO SUIT APPROVAL
51	May 20/85	REVISED TO SUIT APPROVAL
52	May 20/85	REVISED TO SUIT APPROVAL
53	May 20/85	REVISED TO SUIT APPROVAL
54	May 20/85	REVISED TO SUIT APPROVAL
55	May 20/85	REVISED TO SUIT APPROVAL
56	May 20/85	REVISED TO SUIT APPROVAL
57	May 20/85	REVISED TO SUIT APPROVAL
58	May 20/85	REVISED TO SUIT APPROVAL
59	May 20/85	REVISED TO SUIT APPROVAL
60	May 20/85	REVISED TO SUIT APPROVAL
61	May 20/85	REVISED TO SUIT APPROVAL
62	May 20/85	REVISED TO SUIT APPROVAL
63	May 20/85	REVISED TO SUIT APPROVAL
64	May 20/85	REVISED TO SUIT APPROVAL
65	May 20/85	REVISED TO SUIT APPROVAL
66	May 20/85	REVISED TO SUIT APPROVAL
67	May 20/85	REVISED TO SUIT APPROVAL
68	May 20/85	REVISED TO SUIT APPROVAL
69	May 20/85	REVISED TO SUIT APPROVAL
70	May 20/85	REVISED TO SUIT APPROVAL
71	May 20/85	REVISED TO SUIT APPROVAL
72	May 20/85	REVISED TO SUIT APPROVAL
73	May 20/85	REVISED TO SUIT APPROVAL
74	May 20/85	REVISED TO SUIT APPROVAL
75	May 20/85	REVISED TO SUIT APPROVAL
76	May 20/85	REVISED TO SUIT APPROVAL
77	May 20/85	REVISED TO SUIT APPROVAL
78	May 20/85	REVISED TO SUIT APPROVAL
79	May 20/85	REVISED TO SUIT APPROVAL
80	May 20/85	REVISED TO SUIT APPROVAL
81	May 20/85	REVISED TO SUIT APPROVAL
82	May 20/85	REVISED TO SUIT APPROVAL
83	May 20/85	REVISED TO SUIT APPROVAL
84	May 20/85	REVISED TO SUIT APPROVAL
85	May 20/85	REVISED TO SUIT APPROVAL
86	May 20/85	REVISED TO SUIT APPROVAL
87	May 20/85	REVISED TO SUIT APPROVAL
88	May 20/85	REVISED TO SUIT APPROVAL
89	May 20/85	REVISED TO SUIT APPROVAL
90	May 20/85	REVISED TO SUIT APPROVAL
91	May 20/85	REVISED TO SUIT APPROVAL
92	May 20/85	REVISED TO SUIT APPROVAL
93	May 20/85	REVISED TO SUIT APPROVAL
94	May 20/85	REVISED TO SUIT APPROVAL
95	May 20/85	REVISED TO SUIT APPROVAL
96	May 20/85	REVISED TO SUIT APPROVAL
97	May 20/85	REVISED TO SUIT APPROVAL
98	May 20/85	REVISED TO SUIT APPROVAL
99	May 20/85	REVISED TO SUIT APPROVAL
100	May 20/85	REVISED TO SUIT APPROVAL

**4<sup>TH</sup> FLOOR FRAMING PLAN**

NO.	DATE	DESCRIPTION OF REVISION
1	July 2/85	FIELDWORK DWGS ADDED (X59)
2	May 20/85	FIELDWORK DWGS ADDED NEAR COL. 58C & 73
3	May 20/85	FIELDWORK DWGS ADDED NEAR COL. 10 BY 42A
4	May 20/85	W 18 x 40 IN W/OUT RIGID
5	May 20/85	NO WELD OF HANGER END ADDED
6	May 20/85	W/OUT RIGID
7	May 20/85	REVISED TO SUIT APPROVAL
8	May 20/85	REVISED TO SUIT APPROVAL
9	May 20/85	REVISED TO SUIT APPROVAL
10	May 20/85	REVISED TO SUIT APPROVAL
11	May 20/85	REVISED TO SUIT APPROVAL
12	May 20/85	REVISED TO SUIT APPROVAL
13	May 20/85	REVISED TO SUIT APPROVAL
14	May 20/85	REVISED TO SUIT APPROVAL
15	May 20/85	REVISED TO SUIT APPROVAL
16	May 20/85	REVISED TO SUIT APPROVAL
17	May 20/85	REVISED TO SUIT APPROVAL
18	May 20/85	REVISED TO SUIT APPROVAL
19	May 20/85	REVISED TO SUIT APPROVAL
20	May 20/85	REVISED TO SUIT APPROVAL
21	May 20/85	REVISED TO SUIT APPROVAL
22	May 20/85	REVISED TO SUIT APPROVAL
23	May 20/85	REVISED TO SUIT APPROVAL
24	May 20/85	REVISED TO SUIT APPROVAL
25	May 20/85	REVISED TO SUIT APPROVAL
26	May 20/85	REVISED TO SUIT APPROVAL
27	May 20/85	REVISED TO SUIT APPROVAL
28	May 20/85	REVISED TO SUIT APPROVAL
29	May 20/85	REVISED TO SUIT APPROVAL
30	May 20/85	REVISED TO SUIT APPROVAL
31	May 20/85	REVISED TO SUIT APPROVAL
32	May 20/85	REVISED TO SUIT APPROVAL
33	May 20/85	REVISED TO SUIT APPROVAL
34	May 20/85	REVISED TO SUIT APPROVAL
35	May 20/85	REVISED TO SUIT APPROVAL
36	May 20/85	REVISED TO SUIT APPROVAL
37	May 20/85	REVISED TO SUIT APPROVAL
38	May 20/85	REVISED TO SUIT APPROVAL
39	May 20/85	REVISED TO SUIT APPROVAL
40	May 20/85	REVISED TO SUIT APPROVAL
41	May 20/85	REVISED TO SUIT APPROVAL
42	May 20/85	REVISED TO SUIT APPROVAL
43	May 20/85	REVISED TO SUIT APPROVAL
44	May 20/85	REVISED TO SUIT APPROVAL
45	May 20/85	REVISED TO SUIT APPROVAL
46	May 20/85	REVISED TO SUIT APPROVAL
47	May 20/85	REVISED TO SUIT APPROVAL
48	May 20/85	REVISED TO SUIT APPROVAL
49	May 20/85	REVISED TO SUIT APPROVAL
50	May 20/85	REVISED TO SUIT APPROVAL
51	May 20/85	REVISED TO SUIT APPROVAL
52	May 20/85	REVISED TO SUIT APPROVAL
53	May 20/85	REVISED TO SUIT APPROVAL
54	May 20/85	REVISED TO SUIT APPROVAL
55	May 20/85	REVISED TO SUIT APPROVAL
56	May 20/85	REVISED TO SUIT APPROVAL
57	May 20/85	REVISED TO SUIT APPROVAL
58	May 20/85	REVISED TO SUIT APPROVAL
59	May 20/85	REVISED TO SUIT APPROVAL
60	May 20/85	REVISED TO SUIT APPROVAL
61	May 20/85	REVISED TO SUIT APPROVAL
62	May 20/85	REVISED TO SUIT APPROVAL
63	May 20/85	REVISED TO SUIT APPROVAL
64	May 20/85	REVISED TO SUIT APPROVAL
65	May 20/85	REVISED TO SUIT APPROVAL
66	May 20/85	REVISED TO SUIT APPROVAL
67	May 20/85	REVISED TO SUIT APPROVAL
68	May 20/85	REVISED TO SUIT APPROVAL
69	May 20/85	REVISED TO SUIT APPROVAL
70	May 20/85	REVISED TO SUIT APPROVAL
71	May 20/85	REVISED TO SUIT APPROVAL
72	May 20/85	REVISED TO SUIT APPROVAL
73	May 20/85	REVISED TO SUIT APPROVAL
74	May 20/85	REVISED TO SUIT APPROVAL
75	May 20/85	REVISED TO SUIT APPROVAL
76	May 20/85	REVISED TO SUIT APPROVAL
77	May 20/85	REVISED TO SUIT APPROVAL
78	May 20/85	REVISED TO SUIT APPROVAL
79	May 20/85	REVISED TO SUIT APPROVAL
80	May 20/85	REVISED TO SUIT APPROVAL
81	May 20/85	REVISED TO SUIT APPROVAL
82	May 20/85	REVISED TO SUIT APPROVAL
83	May 20/85	REVISED TO SUIT APPROVAL
84	May 20/85	REVISED TO SUIT APPROVAL
85	May 20/85	REVISED TO SUIT APPROVAL
86	May 20/85	REVISED TO SUIT APPROVAL
87	May 20/85	REVISED TO SUIT APPROVAL
88	May 20/85	REVISED TO SUIT APPROVAL
89	May 20/85	REVISED TO SUIT APPROVAL
90	May 20/85	REVISED TO SUIT APPROVAL
91	May 20/85	REVISED TO SUIT APPROVAL
92	May 20/85	REVISED TO SUIT APPROVAL
93	May 20/85	REVISED TO SUIT APPROVAL
94	May 20/85	REVISED TO SUIT APPROVAL
95	May 20/85	REVISED TO SUIT APPROVAL
96	May 20/85	REVISED TO SUIT APPROVAL
97	May 20/85	REVISED TO SUIT APPROVAL
98	May 20/85	REVISED TO SUIT APPROVAL
99	May 20/85	REVISED TO SUIT APPROVAL
100	May 20/85	REVISED TO SUIT APPROVAL