

**ERECTOR NOTE**  
FOR FIELD WELDING  
TO BEAM AS36  
SEE DETAIL A

**ERECTOR NOTE**  
EX. W27x44  
TO BE SUPPLIED WITH L<sup>1</sup>  
WELDED AS SHOWN

**ERECTOR NOTE**  
WASHER PLATE  
OVER JOINT

**ERECTOR NOTE**  
COMPLETE FIELD WELDING  
BEFORE ERECTION OF  
BEAM AS36 OVER

SEE WIREFWS FOR FIELDWORK ON  
EXIST. COL. LINE

BRACING WIPES MOVED  
SEE FWTG

FOR TUBULAR BRIDGE  
SEE CONTR. 84-155

**ERECTOR NOTE**  
FOR FIELD WELDING SEE  
PERIODICAL DWG LISTED BELOW

DWG #	DETAIL #
F-118	1 & 3
F-119	1 & 2

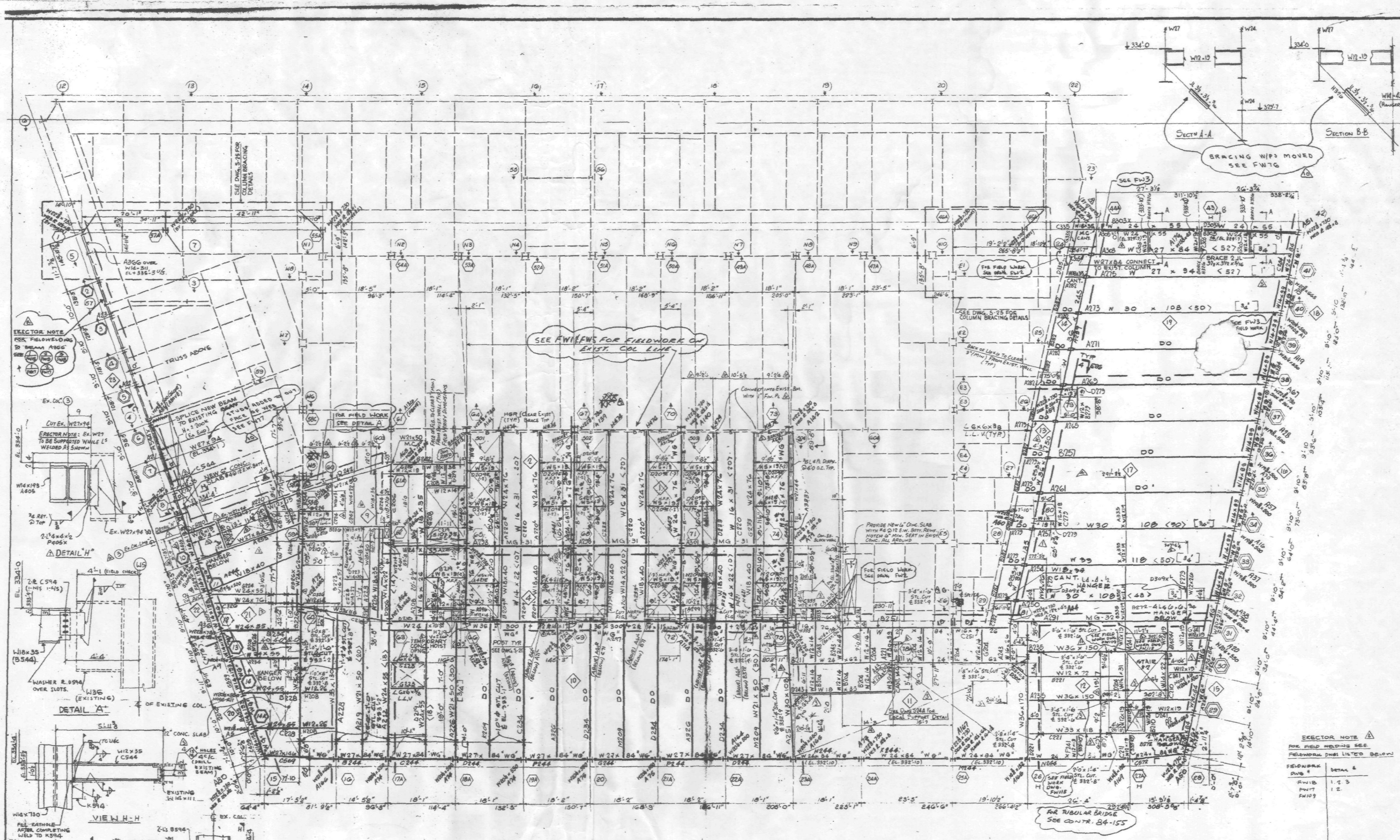
- NOTES**
1. SLAB TO BE 6" (3" x 3") THICK STONE CONCRETE HAVING A COMPRESSIVE STRENGTH OF 3500 PSI AT 28 DAYS. PLACED OVER 3" DEEP COMPOSITE METAL DECK REINFORCED WITH 3/8" x 18" x 18" W-CLAM.
  2. TOP OF NEW STEEL TO BE AT ELEVATION 334'-0" U.C.-3. ON PLAN THIS (----).
  3. ALL BEAMS SHALL BE ASTM A-572, GRADE 50 STEEL 8'-0" ON. ALL WIPES IN BEAMS & SPANNER BEAM SHOWN V-2214 (S3314) SHALL BE WITH A-36 STEEL.
  4. FOR TYPICAL SUPERSTRUCTURE DETAILS SEE DWGS S-24 AND S-24A. FOR SUPERSTRUCTURE GENERAL NOTES SEE DWG. S-20.
  5. WIND GIRDER INDICATED "WG" ON PLAN AND SHALL BE OF ASTM A-36 STEEL. FOR FORCES ON EXTERIOR WIND GIRDETS, SEE DWGS S-13 AND S-20. FOR FORCES ON INTERIOR WIND GIRDETS, SEE DWG. S-21.
  6. FLOOR SLAB SHALL BE SHORED AS PER MANUFACTURER'S REQUIREMENTS.
  7. FOR WALL SUPPORT BY AT ELEVATORS SEE SECT. ON E.T.
  8. PER SIZES OF R. GIRDETS INDICATED MG. SEE DWG. E113.

- LEGEND**
- EXISTING COLUMN BELOW
  - NEW COLUMN
  - TRUSS MEMBER
  - COLUMN OR TRUSS MEMBER ABOVE
  - NEW STEEL
  - - - EXISTING STEEL
  - - - EXISTING STEEL REMOVED
  - H INDICATES HANGER
  - - - INDICATES SHEAR CONNECTORS
  - - - INDICATES CAMBER
  - - - NEW BRACING
  - N.P.I. INDICATES NO FIREPROOFING

10	11	12	13	14	15	16	17	18	19	20	21	22	23	24	25	26	27	28	29	30	31	32	33	34	35	36	37	38	39	40	41	42	43	44	45	46	47	48	49	50	51	52	53	54	55	56	57	58	59	60	61	62	63	64	65	66	67	68	69	70	71	72	73	74	75	76	77	78	79	80	81	82	83	84	85	86	87	88	89	90	91	92	93	94	95	96	97	98	99	100
----	----	----	----	----	----	----	----	----	----	----	----	----	----	----	----	----	----	----	----	----	----	----	----	----	----	----	----	----	----	----	----	----	----	----	----	----	----	----	----	----	----	----	----	----	----	----	----	----	----	----	----	----	----	----	----	----	----	----	----	----	----	----	----	----	----	----	----	----	----	----	----	----	----	----	----	----	----	----	----	----	----	----	----	----	----	----	----	----	----	-----

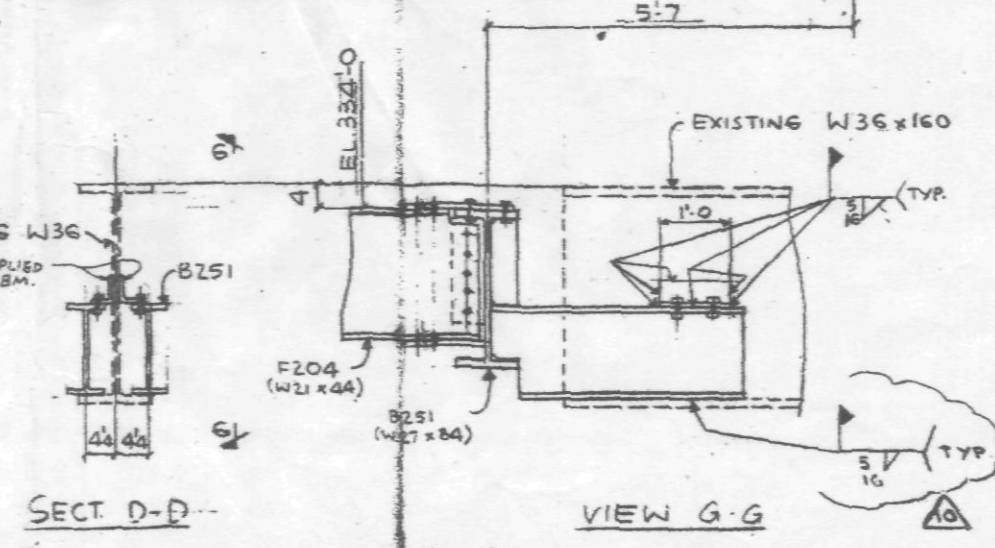
3RD FLOOR FRAMING PLAN		FRANKEL STEEL LIMITED	
7 WORLD TRADE CENTER		30 ATTWELL STREET UNIT 1, BURLINGTON, ONTARIO, CANADA	
DESIGNED BY	DATE	CHECKED BY	DATE
IRVING G. CANTOR P.C.	8-15	IRVING G. CANTOR P.C.	8-15
DRAWN BY	DATE	CHECKED BY	DATE
IRVING G. CANTOR P.C.	8-15	IRVING G. CANTOR P.C.	8-15
NO. DATE BY	DESCRIPTION OF REVISION	NO. DATE BY	DESCRIPTION OF REVISION
1	REVISED AS PER CMT. SHEET G & E	2	REVISED AS PER CMT. SHEET G & E
3	REVISED AS PER CMT. SHEET G & E	4	REVISED AS PER CMT. SHEET G & E
5	REVISED AS PER CMT. SHEET G & E	6	REVISED AS PER CMT. SHEET G & E
7	REVISED AS PER CMT. SHEET G & E	8	REVISED AS PER CMT. SHEET G & E
9	REVISED AS PER CMT. SHEET G & E	10	REVISED AS PER CMT. SHEET G & E





- NOTES**
1. SLAB TO BE 5" (3" + 5") THICK STONE CONCRETE HAVING A COMPRESSIVE STRENGTH OF 3500 PSI AT 28 DAYS. PLACED OVER 3" DEEP 20 GAUGE COMPOSITE METAL DECK REINFORCED WITH 3/8" x 11/4" x 18" W-SPACING 18" O.C.
  2. TOP OF NEW STEEL TO BE AT ELEVATION 334'-0" UIC-10 ON PLAN THIS (---).
  3. ALL BEAMS SHALL BE ASTM A-572, GRADE 50 STEEL 24-OR. ALL WPS IN BEAMS & SPANNER BEAMS SHALL BE W24X119 (333-10) SHALL BE ASTM A36 STEEL. FOR TYPICAL SUPERSTRUCTURE DETAILS SEE SECS. 5-19 AND 5-24. FOR SUBSTRUCTURE GENERAL NOTES SEE PAGE 3-20.
  4. WELD SIZES INDICATED "W6" ON PLAN AND SHALL BE OF ASTM A-58 STEEL. FOR FORCES ON EXTERIOR STEEL MEMBERS, SEE SECS. 5-19 AND 5-20. FOR FORCES ON INTERIOR STEEL MEMBERS, SEE DIV. 5-21.
  5. FLOOR SLAB SHALL BE SHORED AS PER MANUFACTURER'S REQUIREMENTS.
  6. FOR WALL SUPPORT AT ELEVATORS SEE SECS. ON E2.
  7. FOR SIZES OF R. GIRDERS INDICATED "MG" SEE DWG. E113.

**3RD FLOOR FRAMING PLAN**



- LEGEND**
- EXISTING COLUMN BELOW
  - NEW COLUMN
  - TRUSS MEMBER
  - COLUMN OR TRUSS MEMBER ABOVE
  - NEW STEEL
  - - - EXISTING STEEL
  - - - EXISTING STEEL REMOVED
  - H INDICATES HANGER
  - (---) INDICATES SHEAR CONNECTORS
  - (---) INDICATES CAMBER
  - - - NEW BRACING
  - N.F.I. INDICATES NO FIREPROOFING

**REVISIONS**

NO.	DATE	BY	DESCRIPTION OF REVISION
1	7/2/85	JM	ADD FIELD WORK NOTE (K2)
2	7/2/85	JM	FOR GENERAL NOTES SEE DIAG. E20
3	7/2/85	JM	REVISE SECTION 6-G WELD SIZES & SIZES
4	7/2/85	JM	REVISE TO BE APPROVED
5	7/2/85	JM	REVISE TO BE APPROVED
6	7/2/85	JM	REVISE TO BE APPROVED
7	7/2/85	JM	REVISE TO BE APPROVED
8	7/2/85	JM	REVISE TO BE APPROVED
9	7/2/85	JM	REVISE TO BE APPROVED
10	7/2/85	JM	REVISE TO BE APPROVED

**3RD FLOOR FRAMING PLAN**  
**7 WORLD TRADE CENTER**  
**TISHMAN CONSTRUCTION**  
**EMERY ROTH & SONS, INC.**  
**IRWIN G. CANTOR, P.C.**

FRANKEL STEEL LIMITED  
 220 ATLANTIC BLVD. UNIT 1, RED BANK, DELAWARE 19880  
 DRAWN BY: DATE: CHECK BY: DATE:  
 MADE BY: APPROVED BY: CONTRACT NO.: 84-15 SHEET: E3