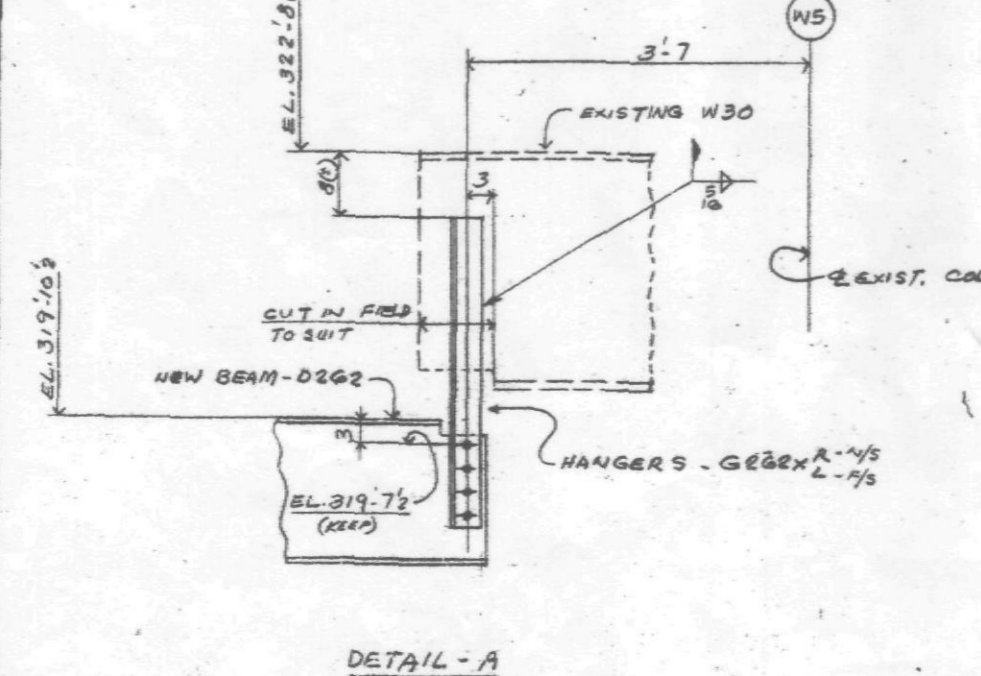
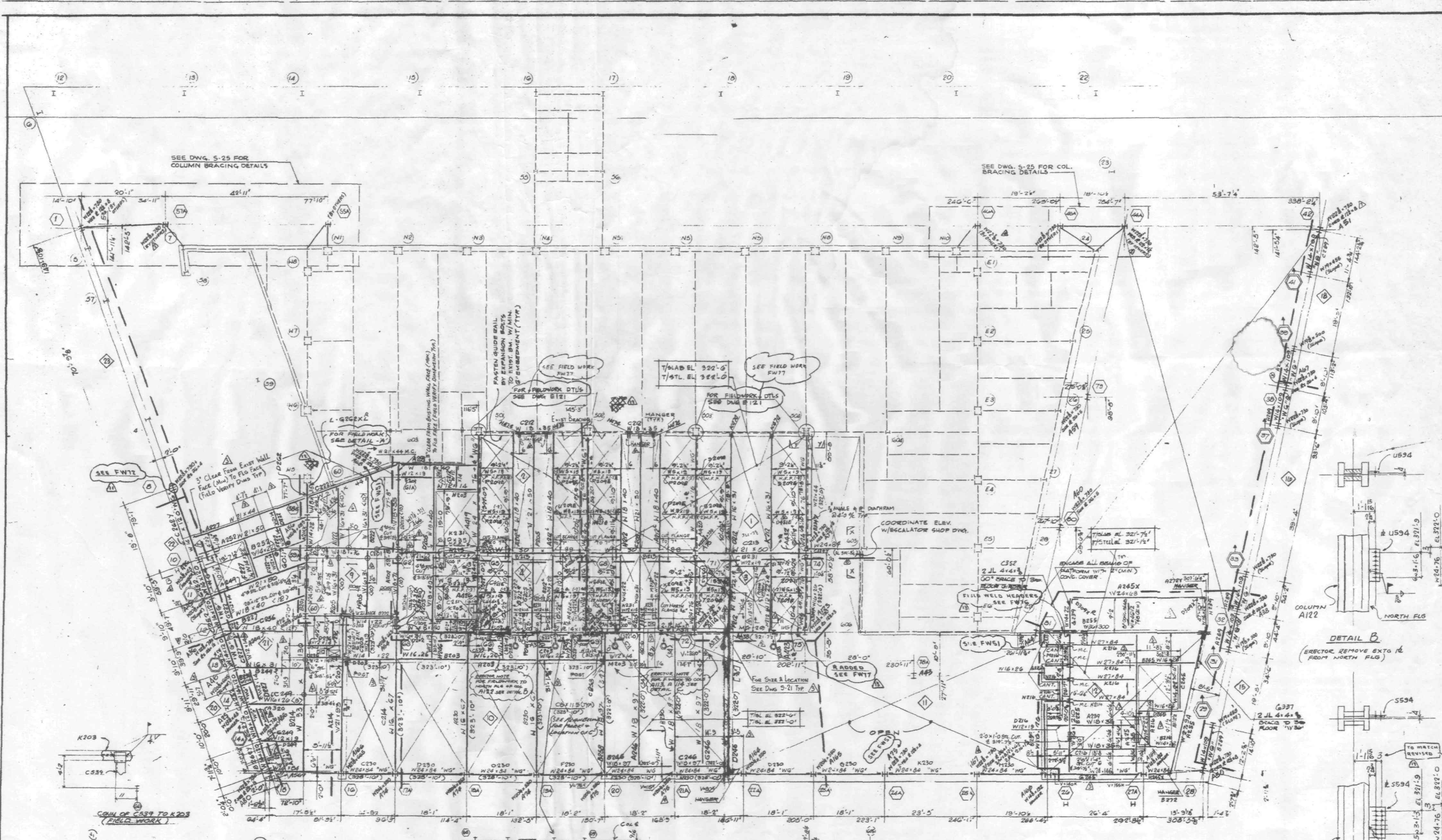


- NOTES**
1. SLAB TO BE 6" (1" x 5") THICK STONE CONCRETE HAVING A COMPRESSIVE STRENGTH OF 5500 PSI AT 28 DAYS, PLACED OVER 5" DEEP 1" GAUGE COMPOSITE METAL DECK REINFORCED WITH 6# x 18" @ 18" O.C. WITH W.C.A.
 2. TOP OF NEW STEEL TO BE AT ELEVATION 519'-10" U.D.-R. ON PLAN THIS (---).
 3. ALL BEAMS SHALL BE ASTM A-572, GRADE 50 STEEL U.D.-R.
 4. FOR TYPICAL SUPERSTRUCTURE DETAILS SEE DWGS. 5-24 AND 5-24A. FOR SUPERSTRUCTURE GENERAL NOTES SEE DWG. 5-20.
 5. WIND GIRDER INDICATED "WG" ON PLAN AND SHALL BE OF ASTM A-36 STEEL. FOR FORCES ON EXTERIOR WIND GIRDER, SEE DWGS. 5-19 AND 5-20. FOR FORCES ON INTERIOR WIND GIRDERS, SEE DWG. 5-21.
 6. FLOOR SLAB SHALL BE SHORED AS PER MANUFACTURER'S REQUIREMENTS.
 7. FOR SIZES OF PLATE GIRDERS (INDICATED MG) SEE DWG. E173.

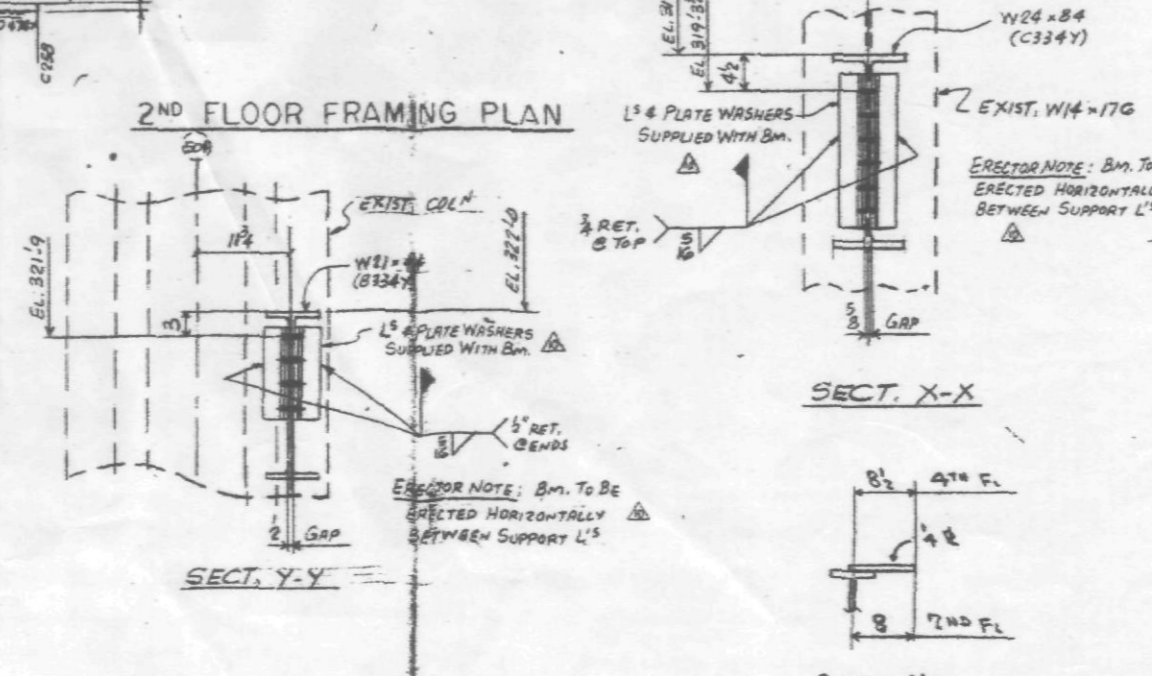
- LEGEND**
- EXISTING COLUMN
 - NEW COLUMN OR HANGER
 - TRUSS MEMBER
 - TRUSS MEMBER ABOVE
 - NEW STEEL
 - - - EXISTING STEEL
 - H HANGER (2" DIA. x 1/2" TH. U.S.A.)
 - (---) INDICATES SHEAR CONNECTORS
 - [---] INDICATES CAMBER
 - - - INDICATES DECK SPAN
 - N.F.P. INDICATES NO FIREPROOFING

NO.	DATE	BY	DESCRIPTION OF REVISION
1	APR 28/85	PC	FOR GENERAL NOTES SEE DWG. E173
2	MAY 1/85	PC	REVISED TO SHOW 2" DIA. WIND GIRDER
3	MAY 1/85	PC	REVISED TO SHOW 2" DIA. WIND GIRDER
4	MAY 1/85	PC	REVISED TO SHOW 2" DIA. WIND GIRDER
5	MAY 1/85	PC	REVISED TO SHOW 2" DIA. WIND GIRDER
6	MAY 1/85	PC	REVISED TO SHOW 2" DIA. WIND GIRDER
7	MAY 1/85	PC	REVISED TO SHOW 2" DIA. WIND GIRDER
8	MAY 1/85	PC	REVISED TO SHOW 2" DIA. WIND GIRDER
9	MAY 1/85	PC	REVISED TO SHOW 2" DIA. WIND GIRDER
10	MAY 1/85	PC	REVISED TO SHOW 2" DIA. WIND GIRDER

2ND FLOOR FRAMING PLAN
 7 WORLD TRADE CENTER
 TOWNHOMES CONSTRUCTION
 EMERY ROAD & SOMERSET ST.
 IRVING G. CANTOR P.C.
 FRANKEL STEEL LIMITED
 230 ATTWELL DRIVE UNIT 1, REXDALE, ONTARIO, CANADA
 DRAWN BY: FR
 DATE: 84-15
 CHECKED BY: []
 DATE: []
 SHEET: E2



- NOTES**
- SLAB TO BE 6" (1' x 5') THICK STONE CONCRETE HAVING A COMPRESSIVE STRENGTH OF 3500 PSI AT 28 DAYS. PLACES OVER 3" DEEP 1" GAUGE COMPOSITE METAL DECK REINFORCED WITH 6# x 18" @ 5' W/4" W/4".
 - TOP OF NEW STEEL TO BE AT ELEVATION 319'-10" U-D-N. OR PLAN THIS (---).
 - ALL BEAMS SHALL BE ASTM A-572, GRADE 50 STEEL U-D-N.
 - FOR TYPICAL SUPERSTRUCTURE DETAILS SEE DWGS. S-24 AND S-27A. FOR SUPERSTRUCTURE GENERAL NOTES SEE DWG. S-20.
 - WIND GIRDERS INDICATED "W" OR "W" ON PLAN AND SHALL BE OF ASTM A-502 STEEL. FOR FORCES ON EXTERIOR WIND GIRDERS, SEE DWGS. S-19 AND S-20. FOR FORCES ON INTERIOR WIND GIRDERS, SEE DWG. S-21.
 - FLOOR SLAB SHALL BE SHORED AS PER MANUFACTURER'S REQUIREMENTS.
 - FOR SIZES OF PLATE GIRDERS (INDICATED MG) SEE DWG. E173.



- LEGEND**
- EXISTING COLUMN
 - NEW COLUMN OR HANGER
 - TRUSS MEMBER
 - TRUSS MEMBER ABOVE
 - NEW STEEL
 - EXISTING STEEL
 - HANGER (2 1/2" x 1/2" THROUGH)
 - (---) INDICATES SHEAR CONNECTORS
 - [---] INDICATES CAMBER
 - ← INDICATES DECK SPIN
 - N.F.P. INDICATES NO FIRE PROOFING

FOR GENERAL NOTES SEE D.T.G. E2

NO.	DATE	BY	DESCRIPTION OF REVISION
1	July 2/85	FR	FOR NOTES OF DETAILS "B", "C" ADDED
2	July 2/85	FR	FOR NOTES OF DETAILS "B", "C" ADDED
3	July 2/85	FR	FOR NOTES OF DETAILS "B", "C" ADDED
4	July 2/85	FR	FOR NOTES OF DETAILS "B", "C" ADDED
5	July 2/85	FR	FOR NOTES OF DETAILS "B", "C" ADDED
6	July 2/85	FR	FOR NOTES OF DETAILS "B", "C" ADDED
7	July 2/85	FR	FOR NOTES OF DETAILS "B", "C" ADDED
8	July 2/85	FR	FOR NOTES OF DETAILS "B", "C" ADDED
9	July 2/85	FR	FOR NOTES OF DETAILS "B", "C" ADDED
10	July 2/85	FR	FOR NOTES OF DETAILS "B", "C" ADDED

2ND FLOOR FRAMING PLAN
 7 WORLD TRADE CENTER
 TISHMAN CONSTRUCTION
 EMERY ROTH & SONS P.C.
 IRVIN G. CANTOR P.C.