

- NOTES**
- TOP OF STEEL TO BE AT ELEV. 308'-7" U.A.N. THIS (EL.)
 - ALL BEAMS SHALL BE ASTM A992 STEEL EXCEPT THOSE NOTED GR 50 WHICH SHALL BE ASTM A-572, GRADE 50

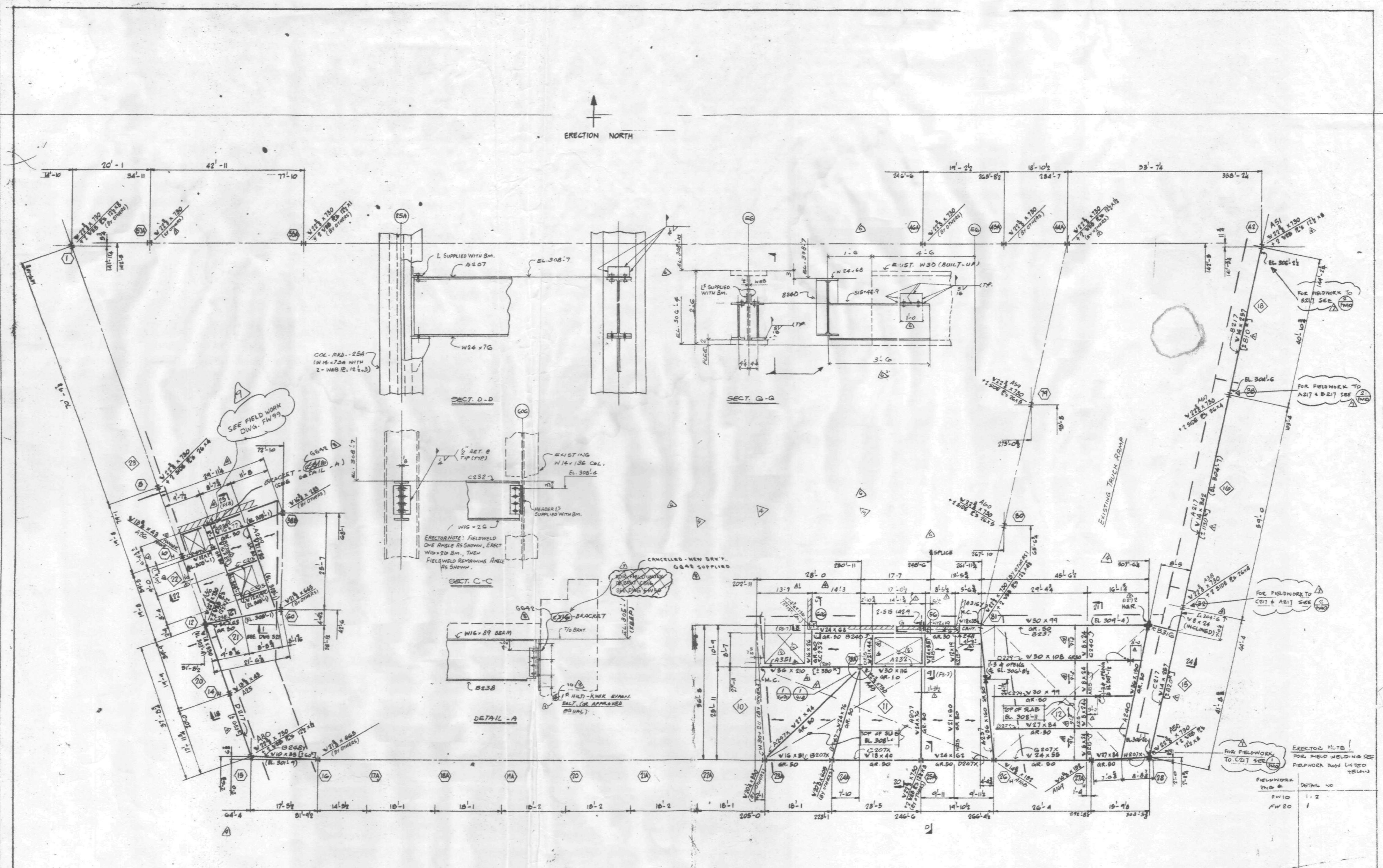
FIRST FLOOR FRAMING PLAN
 OF SLAB BL. 309'-3" U.A.O.

- LEGEND**
- [2x60"] - INDICATES AXIAL LOAD IN KIPS
 - H - INDICATES HANGER
 - - DIRECTION SPANNED BY SLAB
 - - INDICATES EXISTING COLUMN
 - - INDICATES NEW COLUMN
 - - INDICATES ELEV. TIE-DOWN BEAM FOR DET. SEE DWG. S-24A
 - ← - INDICATES NO. OF 3/4" x 6" LG. STUDS TO BE PLACED THIS → & BU

July 20/05

NO.	DATE	BY	DESCRIPTION OF REVISION
1	7/20/05	J.S.	REVISED FIELDWORK NOTES ADDED
2	7/20/05	J.S.	REVISED FIELDWORK NOTES ADDED
3	7/20/05	J.S.	REVISED FIELDWORK NOTES ADDED
4	7/20/05	J.S.	REVISED FIELDWORK NOTES ADDED
5	7/20/05	J.S.	REVISED FIELDWORK NOTES ADDED
6	7/20/05	J.S.	REVISED FIELDWORK NOTES ADDED
7	7/20/05	J.S.	REVISED FIELDWORK NOTES ADDED
8	7/20/05	J.S.	REVISED FIELDWORK NOTES ADDED
9	7/20/05	J.S.	REVISED FIELDWORK NOTES ADDED
10	7/20/05	J.S.	REVISED FIELDWORK NOTES ADDED

FIRST FLOOR FRAMING PLAN
 FRANKEL STEEL LIMITED
 130 ATWELL DRIVE UNIT 1, MISSISSAUGA, ONTARIO L4V 1P4
 DRAWN BY: J.S.
 CHECKED BY: J.S.
 DATE: 7/20/05
 PROJECT: WORLD TRADE CENTER
 CLIENT: FRANKEL STEEL LIMITED
 CONTRACT NO.: 84-15
 SHEET NO.: E-1



- NOTES**
1. TOP OF STEEL TO BE AT ELEV. 308'-7" U.O.N. THIS (EL.)
 2. ALL BEAMS SHALL BE ASTM A36 STEEL EXCEPT THOSE NOTED 'GR 50' WHICH SHALL BE ASTM A-572, GRADE 50

FIRST FLOOR FRAMING PLAN
 TOP OF SLAB EL. 309'-3" U.O.

- LEGEND**
- [2 GO*] - INDICATES AXIAL LOAD IN KIPS
 - H - INDICATES HANGER
 - DIRECTION SPANNED BY SLAB
 - INDICATES EXISTING COLUMN
 - INDICATES NEW COLUMN
 - INDICATES ELEV. TI-DOWN BEAM FOR DET. SEE DWG. S-24A
 - (---) INDICATES NO. OF 3/4" x 6" LG. STUDS TO BE PLACED THIS --- & BM

NO.	DATE	BY	DESCRIPTION OF REVISION
1			ADDED 50% S.F. FIELD WELD WERE ADDED
2			ADDED 50% S.F. FIELD WELD WERE ADDED
3			ADDED 50% S.F. FIELD WELD WERE ADDED
4			ADDED 50% S.F. FIELD WELD WERE ADDED
5			ADDED 50% S.F. FIELD WELD WERE ADDED
6			ADDED 50% S.F. FIELD WELD WERE ADDED
7			ADDED 50% S.F. FIELD WELD WERE ADDED
8			ADDED 50% S.F. FIELD WELD WERE ADDED
9			ADDED 50% S.F. FIELD WELD WERE ADDED
10			ADDED 50% S.F. FIELD WELD WERE ADDED

July 2/95
 FOR GENERAL NOTES SEE DWG. E20
 10/24/95
 11/24/95
 12/14/95

FIRST FLOOR FRAMING PLAN		FRANKEL STEEL LIMITED	
7 WORLD TRADE CENTER		120 ATLANTA DRIVE, SUITE 1, NEWARK, NEW JERSEY	
EMERY BROTHERS & SONS, INC.		DRAWN BY: F.R.	
IRWIN G. GANTOR, P.E.		CHECKED BY: J.V.	
CUSTOMERS DWG. NO: 51		DATE: NOV 01 2001	
		SHEET NO: 84-15	
		SHEET TOTAL: E1	